



A Closer Look at Your Region

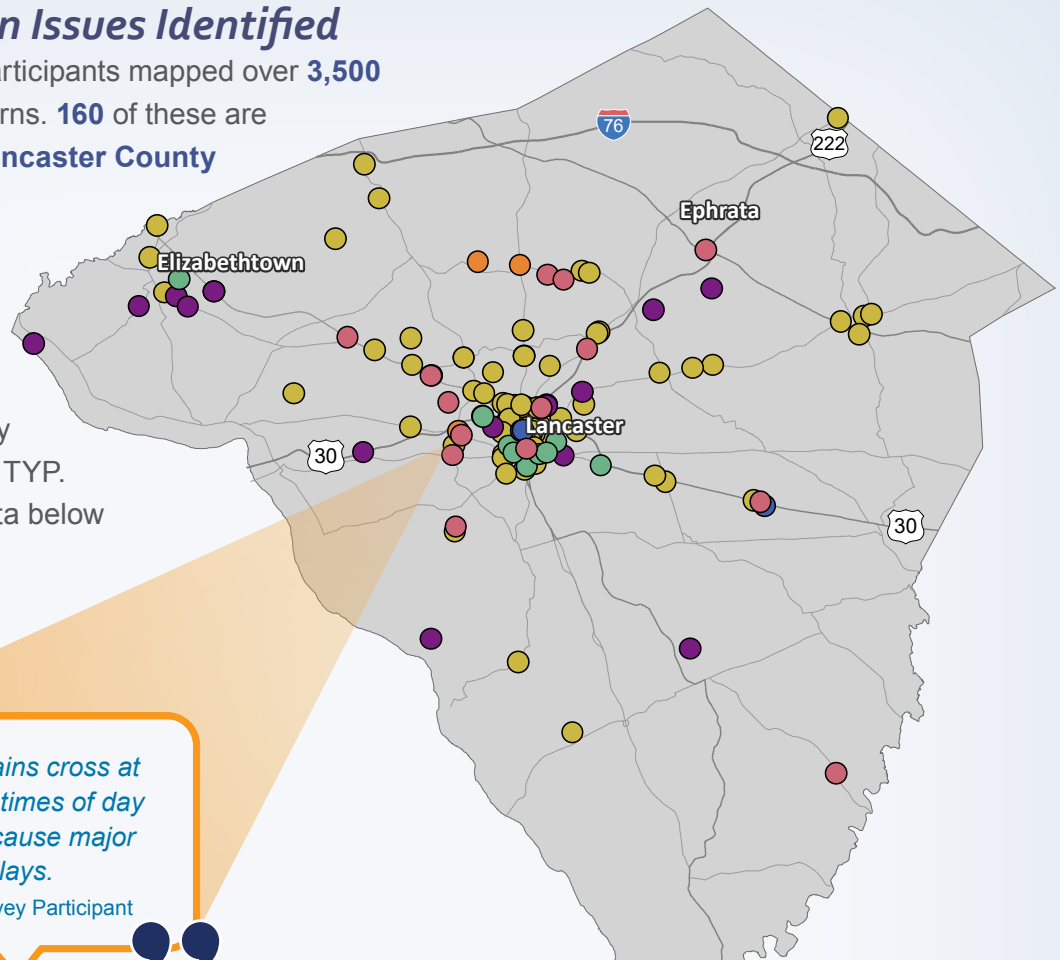
The State Transportation Commission's six-week public comment period for the 2019 Twelve Year Program (TYP) Update began in March and concluded in April 2017. During the comment period, the public had the opportunity to take an online survey and participate in an online public meeting. All public feedback received was analyzed to better understand public priorities and transportation trends.

State Transportation Commission
2019 Twelve Year Program Update

Transportation Issues Identified

Statewide, survey participants mapped over **3,500** transportation concerns. **160** of these are located within the **Lancaster County region**.

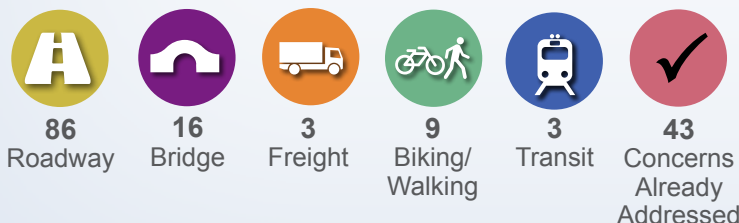
During the mapping exercise, some discovered their concerns were already addressed by projects on the 2017 TYP. See the map and data below for more details.



“
Freight trains cross at very busy times of day and can cause major delays.
”
- Local Survey Participant

Number of Issues Identified

The icons below correspond with the dots on the map.



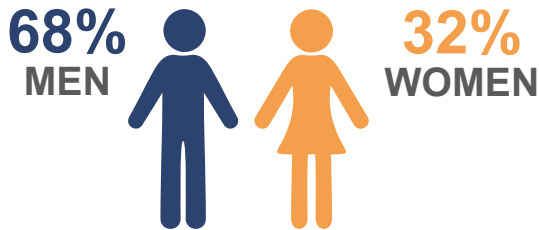
Examples of 2017 TYP projects that addressed public concerns

- Prince Street and Duke Street Resurfacing
- ITS - Lancaster Phase 4
- US 222 Reconstruction
- State Road Interchange Improvements
- Route 23/741 Interchange Improvements

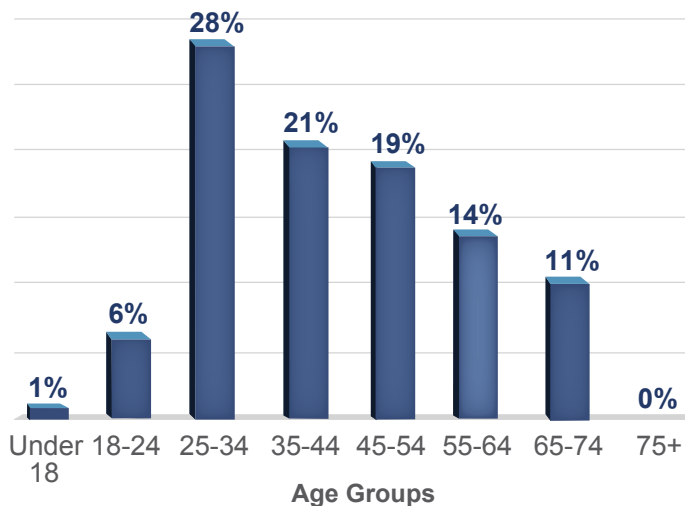
About the Survey Participants in Your Region

Nearly 5,000 individuals participated in the online survey statewide and 181 of the survey participants identified with the Lancaster County region through feedback provided. Learn more about the participants from this region.

Gender



Age



Top 3 Transportation Modes



Drive Alone



Walking



Passenger Rail



- 1 Traffic Flow
- 2 Road Pavement
- 3 Bridges
- 4 Interstate Highways
- 5 Walking
- 6 Passenger Rail
- 7 Transit
- 8 Bicycling
- 9 Freight
- 10 Aviation

For More Information

Office of the State Transportation Commission
and Transportation Advisory Committee

P.O. Box 3365 | Harrisburg, PA 17105-3633

Phone: 717-783-2262

Email: RA-PennDOTSTC@pa.gov