



A Closer Look at Your Region

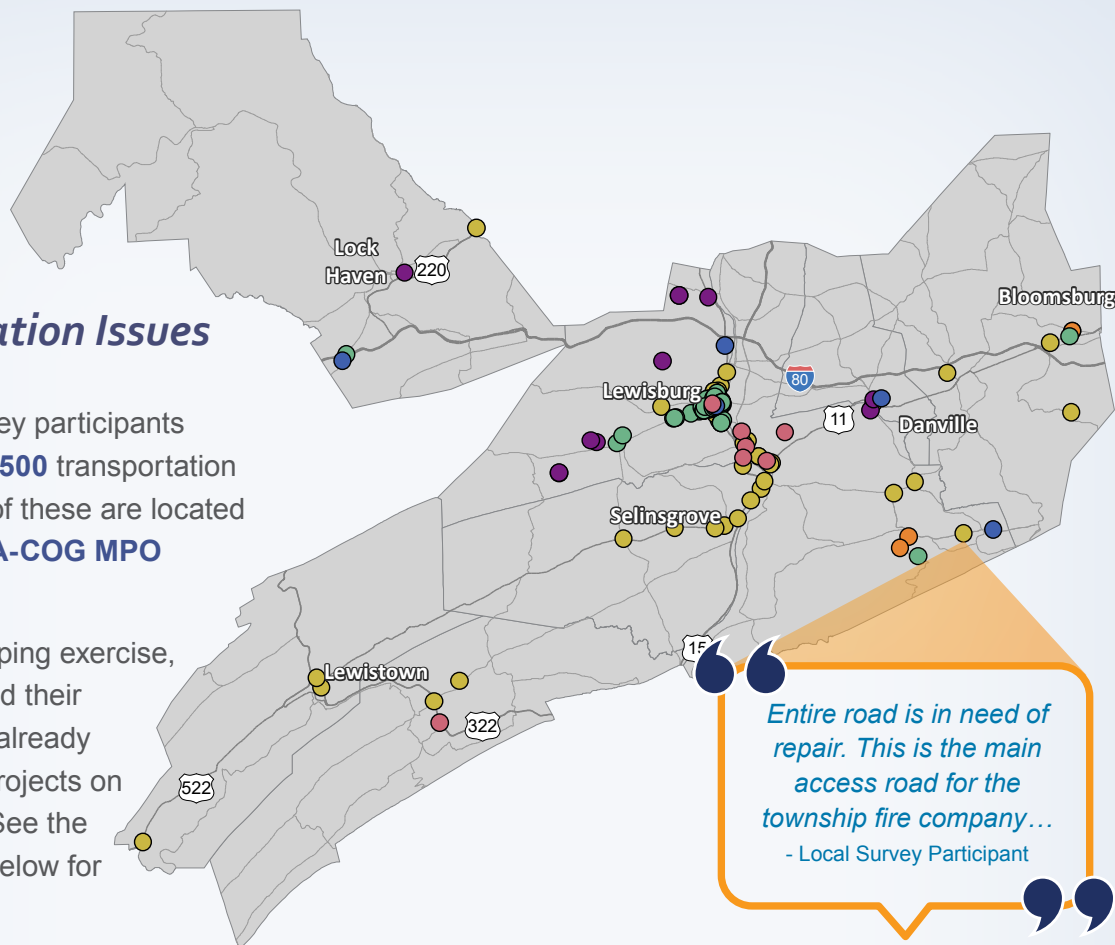
The State Transportation Commission's six-week public comment period for the 2019 Twelve Year Program (TYP) Update began in March and concluded in April 2017. During the comment period, the public had the opportunity to take an online survey and participate in an online public meeting. All public feedback received was analyzed to better understand public priorities and transportation trends.

State Transportation Commission
2019 Twelve Year Program Update

Transportation Issues Identified

Statewide, survey participants mapped over **3,500** transportation concerns. **153** of these are located within the **SEDA-COG MPO region**.

During the mapping exercise, some discovered their concerns were already addressed by projects on the 2017 TYP. See the map and data below for more details.



Number of Issues Identified

The icons below correspond with the dots on the map.



48

Roadway



20

Bridge



3

Freight



60

Biking/
Walking



5

Transit



17

Concerns
Already
Addressed

Examples of 2017 TYP projects that addressed public concerns

Central Susquehanna Valley
Thruway

Lewisburg US 15 Adaptive Signals

Route 147 Reconstruction - Packer
Island Bridge to 8th Street

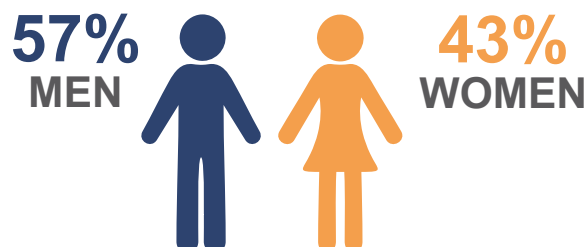
Juniata County Parking Study

Walbash Road over Rapid Run in
Union County

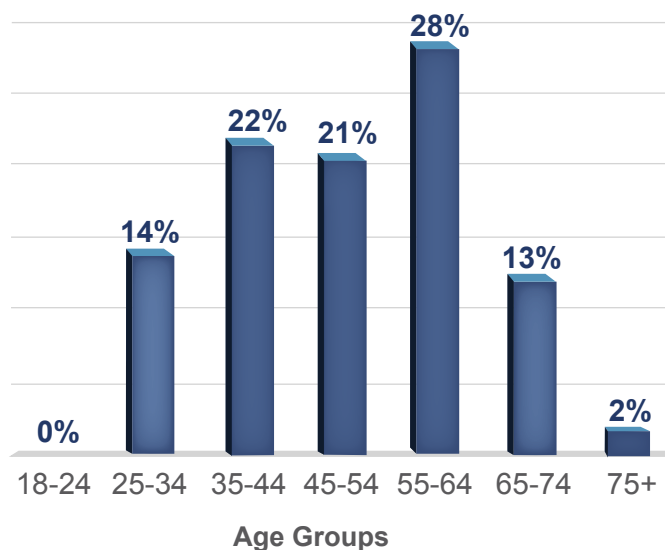
About the Survey Participants in Your Region

Nearly 5,000 individuals participated in the online survey statewide and 114 of the survey participants identified with the SEDA-COG MPO through feedback provided. Learn more about the participants from this region.

Gender



Age



Top 3 Transportation Modes



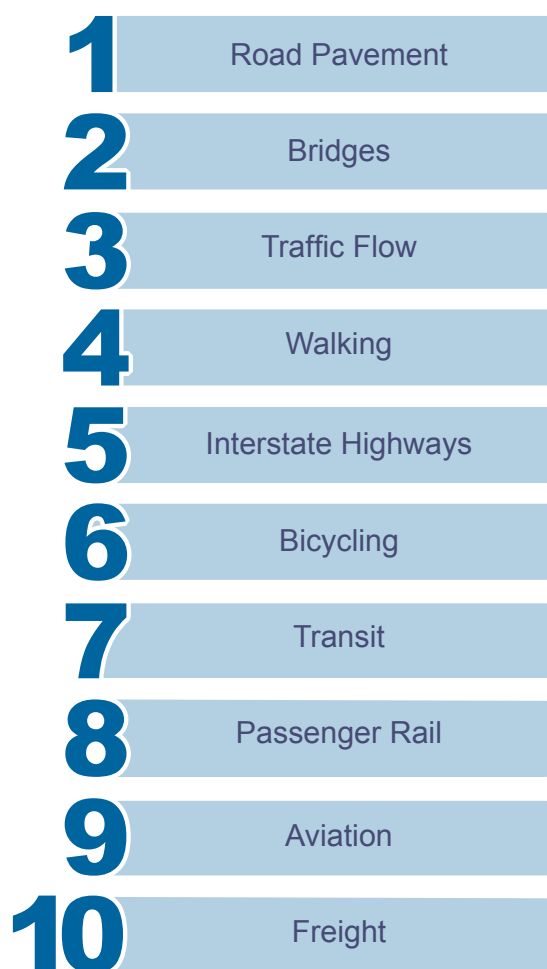
Drive Alone



Walking



Ride Share



For More Information

Office of the State Transportation Commission
and Transportation Advisory Committee

P.O. Box 3365 | Harrisburg, PA 17105-3633

Phone: 717-783-2262

Email: RA-PennDOTSTC@pa.gov