



State Transportation  
Commission

# 2021 TWELVE YEAR PROGRAM UPDATE REGIONAL TRANSPORTATION SURVEY SUMMARY

## SUSQUEHANNA ECONOMIC DEVELOPMENT ASSOCIATION - COUNCIL OF GOVERNMENTS (SEDA-COG MPO)

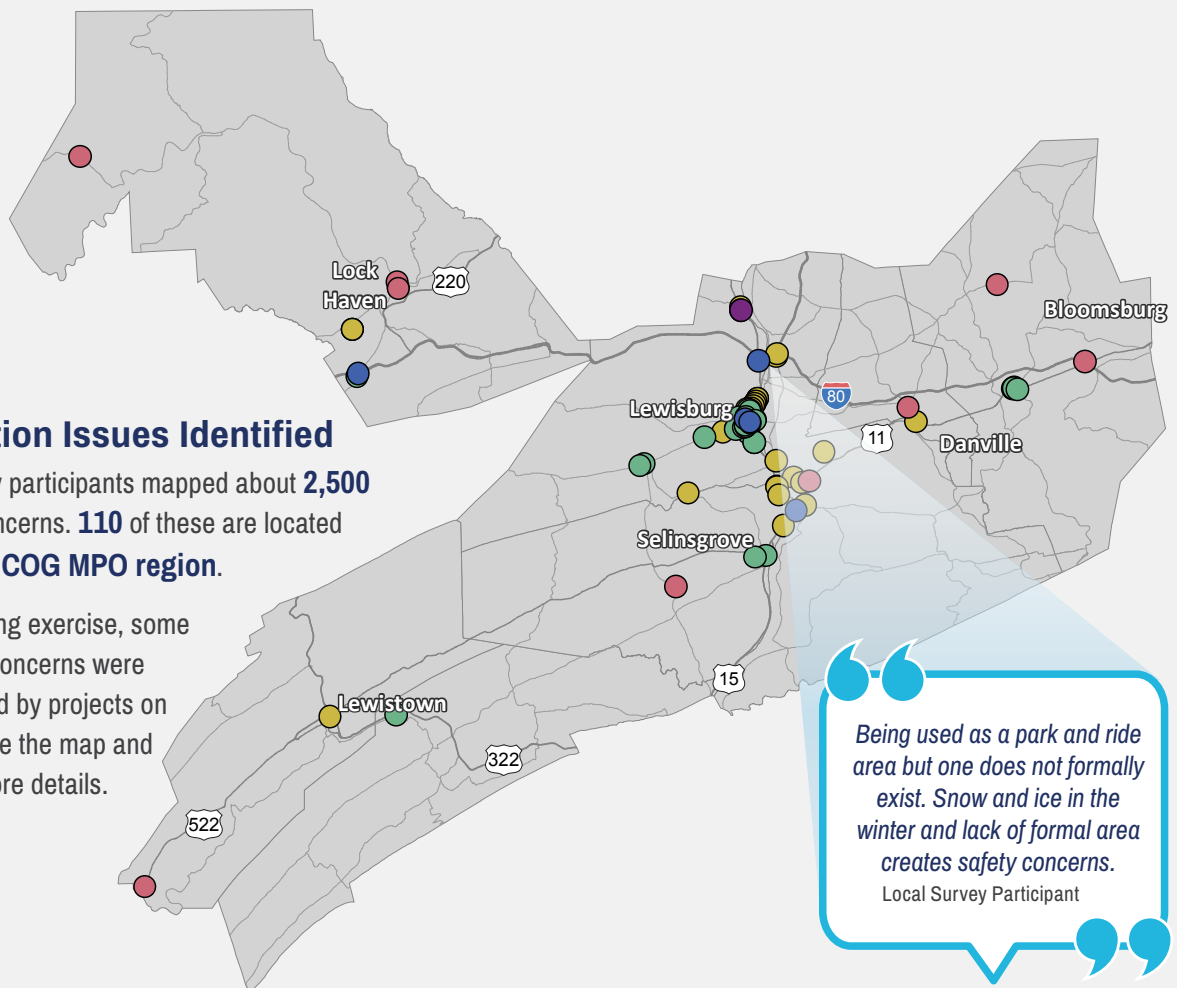
### A CLOSER LOOK AT YOUR REGION

The State Transportation Commission's 45-day open public comment period for the 2021 Twelve Year Program (TYP) Update was held March 11 through April 26, 2019. During the comment period, the public had the opportunity to take the Transportation Survey and participate in an online public meeting on either a webinar platform or Facebook Live. All public feedback received was analyzed to better understand public priorities and transportation trends.

#### Transportation Issues Identified

Statewide, survey participants mapped about **2,500** transportation concerns. **110** of these are located within the **SEDA-COG MPO region**.

During the mapping exercise, some discovered their concerns were already addressed by projects on the 2019 TYP. See the map and data below for more details.

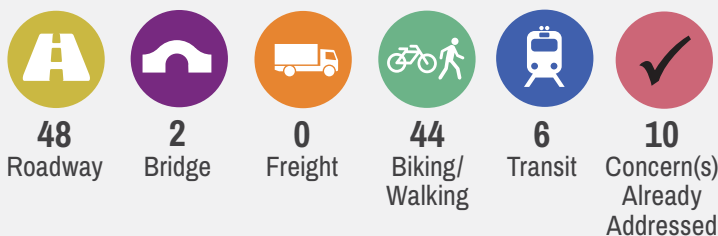


*Being used as a park and ride area but one does not formally exist. Snow and ice in the winter and lack of formal area creates safety concerns.*

Local Survey Participant

#### Number Of Issues Identified

The icons below correspond with the same color dots on the map.



#### Examples of 2019 TYP projects that addressed public concerns

Bucktail Trail Highway Resurfacing in Clinton County  
US 11 Resurfacing in Columbia and Northumberland Counties

US 22 Resurfacing in Mifflin County  
PA 54 Corridor Safety Improvement in Montour County



State Transportation  
Commission

# 2021 TWELVE YEAR PROGRAM UPDATE REGIONAL TRANSPORTATION SURVEY SUMMARY

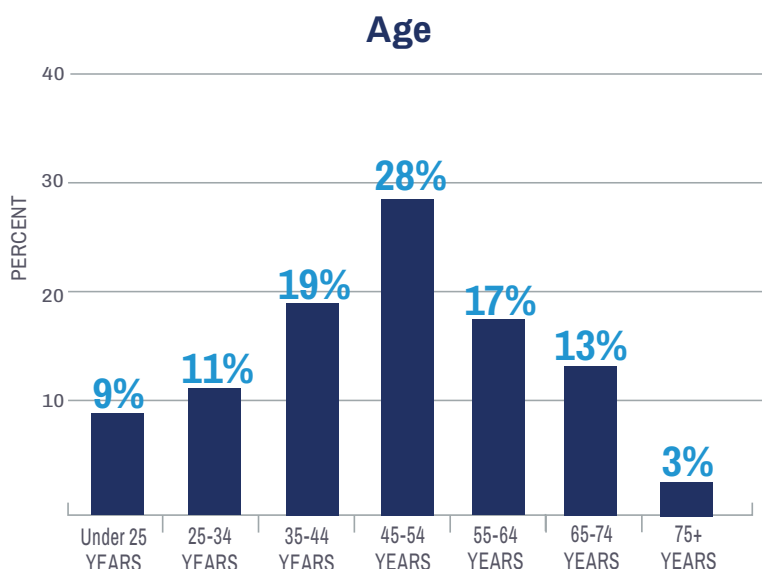
## SUSQUEHANNA ECONOMIC DEVELOPMENT ASSOCIATION - COUNCIL OF GOVERNMENTS (SEDA-COG MPO)

### ABOUT THE SURVEY PARTICIPANTS IN YOUR REGION

Over 6,000 individuals participated in the online survey statewide, and **144** of the survey participants identified with the **SEDA-COG MPO** region through feedback provided. Learn more about the participants from this region.

Male	71	50%
Female	68	48%
Third gender/nonconforming	0	0%
Prefer to self describe	0	0%
Prefer not to answer	3	2%

Responses to demographic questions were optional.



### Top Transportation Modes



DRIVE ALONE



WALKING



BICYCLING

### Transportation Priorities Ranking



#### #1 ROAD PAVEMENT

Repairing, restoring, reconstructing and maintaining Pennsylvania's 120,000 miles of state and local roadways to improve your travel



#### #2 BRIDGES

Repairing, replacing and maintaining Pennsylvania's 31,000 state and local bridges



#### #3 TRAFFIC FLOW

Using technology to improve traffic flow and construction of new roads and additional travel lanes to safely move people and goods more efficiently

4

#### INTERSTATE HIGHWAY

Specific, prioritized investments in reconstructing Pennsylvania's 1,868 miles of interstate highways

5

#### WALKING

Accessible and connected routes to get you where you need to go safely

6

#### TRANSIT

Accessible and timely public transportation that covers an extensive service area and crosses regions

7

#### AVIATION

Modern facilities, operations and a wide range of commercial airline choices at airports

8

#### BICYCLING

Safe bicycle routes and facilities throughout the commonwealth to get you where you need to go

9

#### PASSENGER RAIL

Intercity and commuter rail service across Pennsylvania with out-of-state connections

10

#### FREIGHT

Modern highways, railways, airports and waterways to support the economy and ensure the efficient movement of goods and services