



Pennsylvania

Department of Transportation

**PENNSYLVANIA NATIONAL  
ELECTRIC VEHICLE  
INFRASTRUCTURE (NEVI) PROGRAM**

**TRANSPORTATION ADVISORY  
COMMITTEE MEETING**

**FEBRUARY 2, 2026**

# EV REGISTRATIONS IN PA

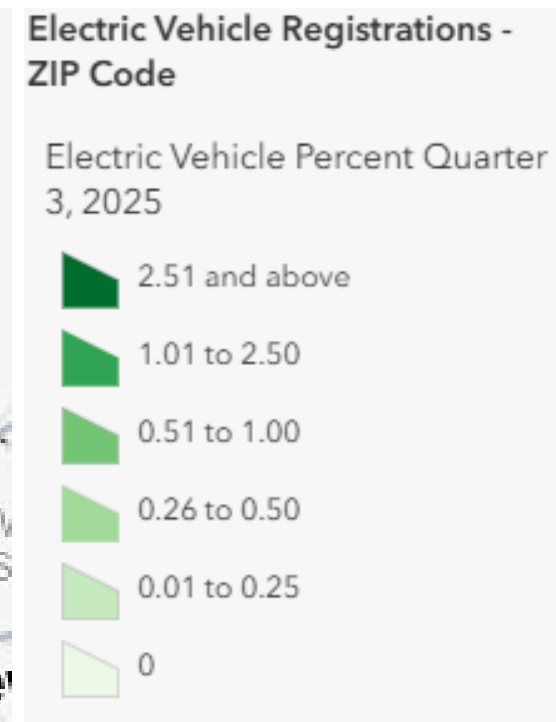
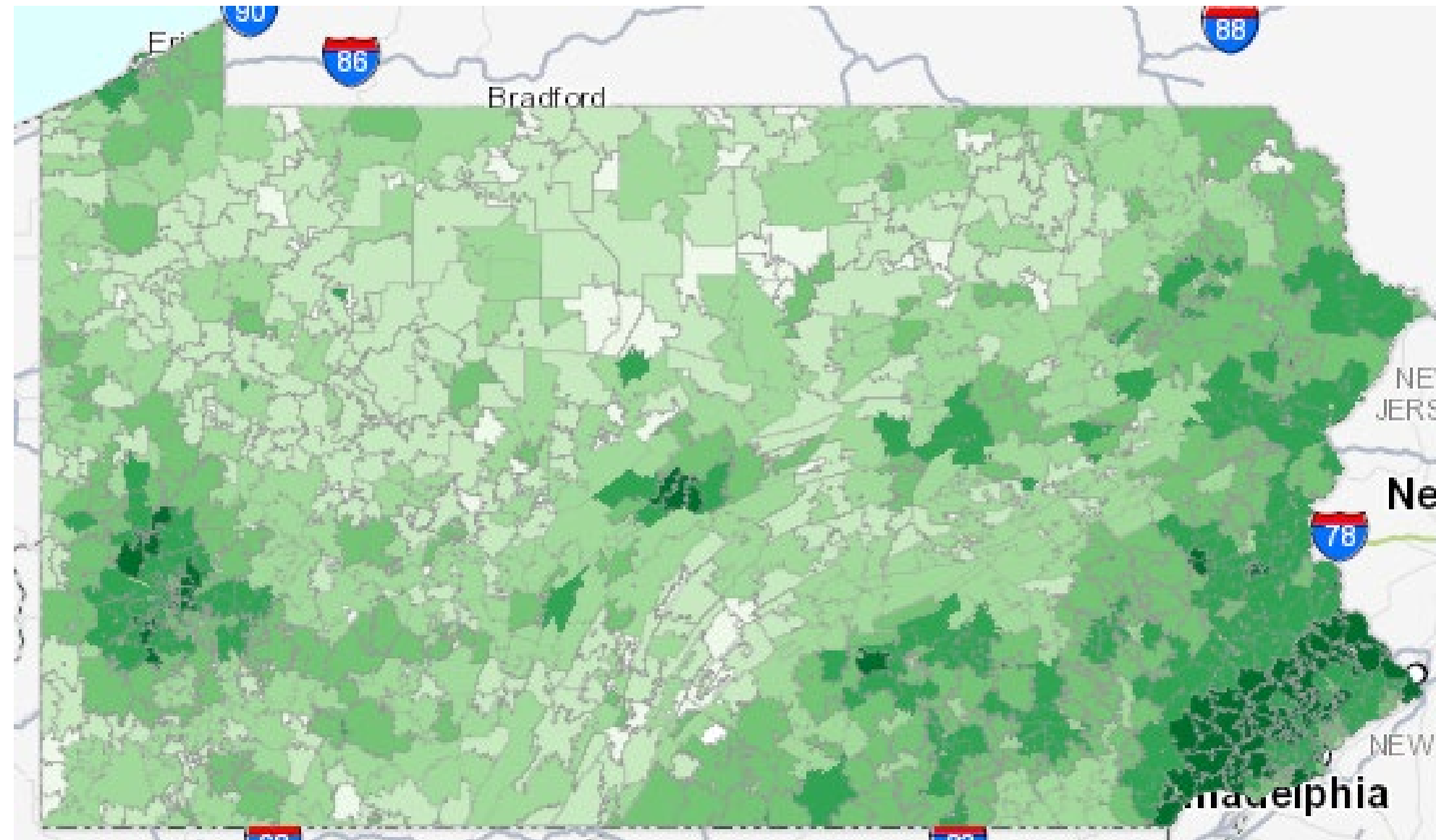
As of summer 2025, about 1.5% of motor vehicles in PA are electric

	March 2023	March 2024	March 2025	December 2025
<b>BEV</b>	44,800	66,104	91,863	110,721
<b>PHEV</b>	24,346	39,850	50,038	56,160
<b>FCEV</b>	1	1	2	3
<b>Total</b>	69,147	105,955	141,903	166,884

- BEV – Battery Electric Vehicle
- PHEV – Plug-in Hybrid
- FCEV – Hydrogen Fuel Cell Electric Vehicle

Source: PennDOT registration database

# EV REGISTRATIONS IN PA



[PennDOT EV Registrations Interactive Map](#)

# OVERVIEW OF PA'S NEVI FORMULA PROGRAM



## \$171.5 Million

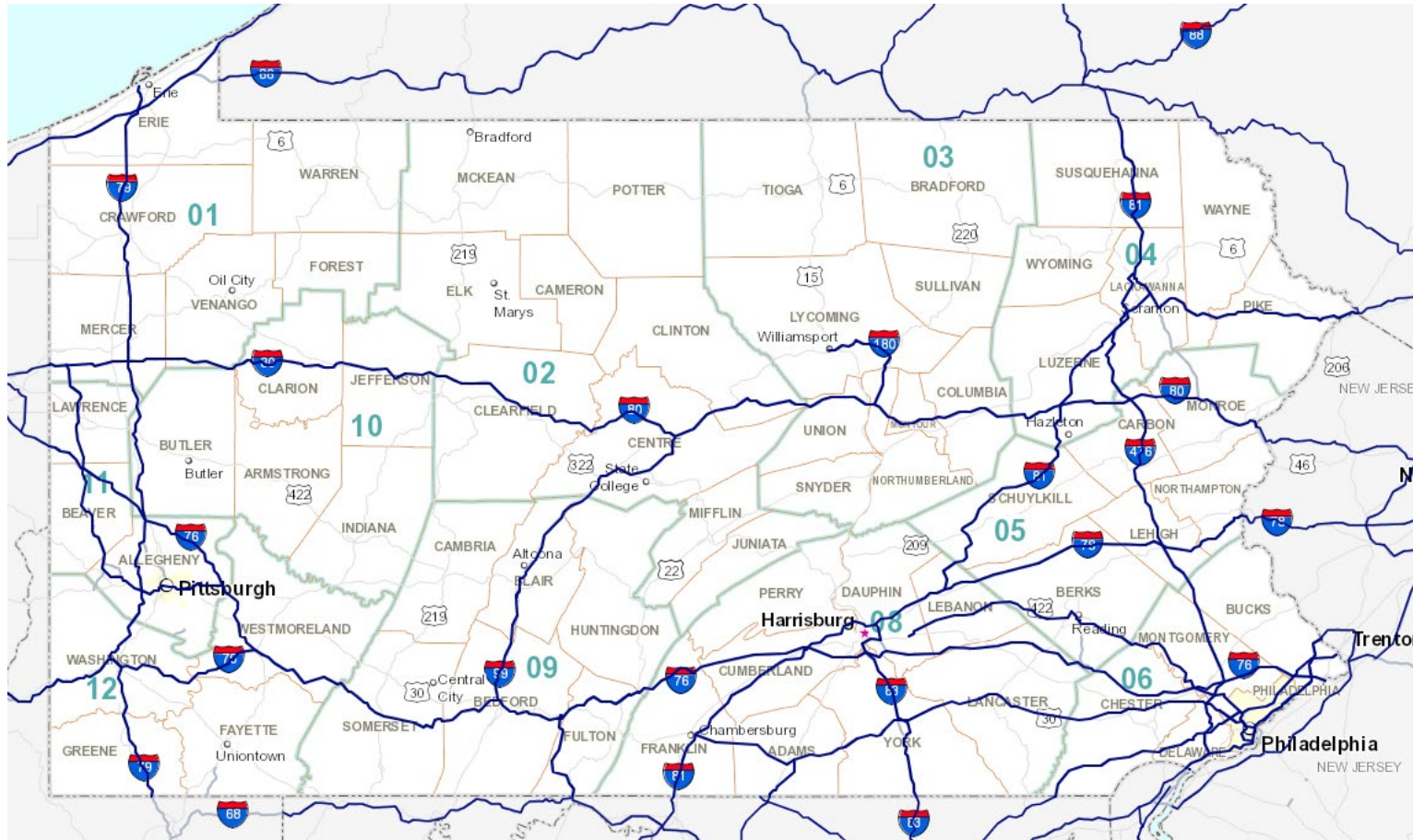
Total Pennsylvania NEVI Funds

FFY 2022	FFY 2023	FFY 2024	FFY 2025	FFY 2026
<b>\$25.4 M</b>	<b>\$36.5 M</b>	<b>\$36.5 M</b>	<b>\$36.5 M</b>	<b>\$36.5 M</b>

## PA NEVI Plan Annual Updates

PA NEVI Plan Year	For FFY Funding	Plan Submitted	Plan Approved
2022 PA NEVI Plan	FFY 2022, FFY 2023	July 21, 2022	September 14, 2022
2023 PA NEVI Plan	FFY 2024	August 1, 2023	October 4, 2023
2024 PA NEVI Plan	FFY 2025	August 28, 2024	November 15, 2024
2025 PA NEVI Plan	FFY 2026	August 27, 2025	September 5, 2025

# EV ALTERNATIVE FUEL CORRIDORS



- PennDOT has nominated corridors over 7 rounds - includes interstates and portions of US 30, US 15, US 1, and US 422 - over 1,800 miles of roadway
- NEVI funding must be applied to AFCs until a “**Build-Out**” certification by FHWA



# YEARS 1-2 CHARGING FOCUS

## DC Fast Charging

Public

4 ports

CCS Connectors

At least 150kw power per port (600kw total)

Within 1-mile of highway, 50 miles of the next station

## How to Charge Your EV



Charge Time



Charging Locations

**Level 1**

**3.5 - 6.5 miles**  
Per Hour

Residential,  
Workplace

**Level 2**

**14 - 35 Miles**  
Per Hour

Residential,  
Workplace,  
Destinations

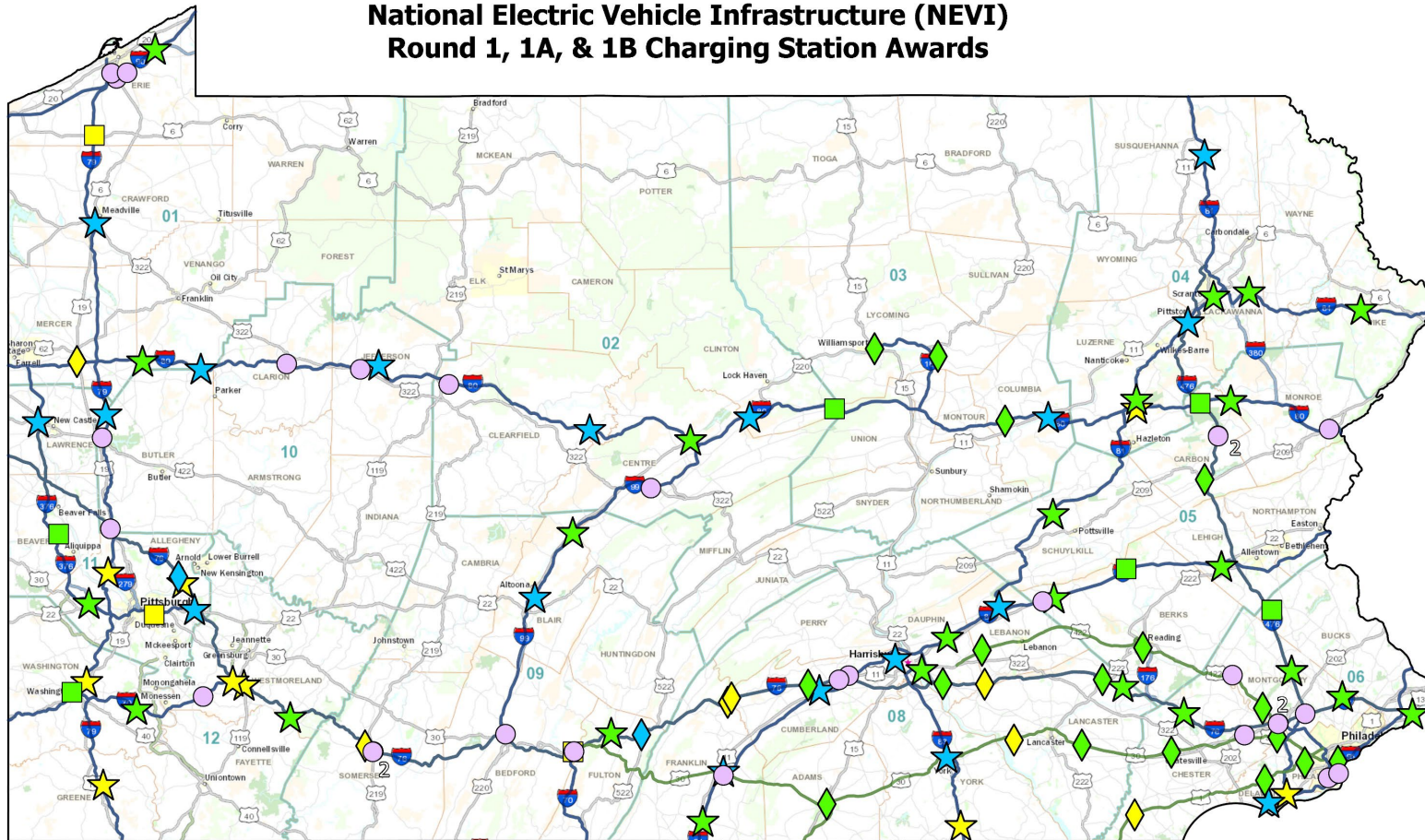
**DC Fast Charge**

**200+ miles**  
Per Hour

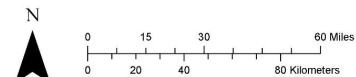
Highways,  
Communities,  
Destinations

# ROUND 1, 1A & 1B ACTIVE PROJECTS

National Electric Vehicle Infrastructure (NEVI)  
Round 1, 1A, & 1B Charging Station Awards



- 84 projects within 43 counties
- \$54.7 million federal investment
- [PennDOT Active NEVI Projects Interactive Map](#)



PA Department of Transportation | Bureau of Planning and Research  
Geographic Information Division  
400 North Street 6th Floor W-East | Harrisburg, PA 17120  
RA-PDPENNDOT\_GIS@pa.gov  
WGS 1984 Web Mercator Auxiliary Sphere  
Updated: 10/16/2025  
© 2023 PA Department of Transportation

**Round 1 Status**

- ★ In Progress (9)
- ★ Operational (18)
- ★ Planned (24)

**Round 1A Status**

- ◆ In Progress (7)
- ◆ Operational (2)
- ◆ Planned (17)

**Round 1B Status**

- In Progress (3)
- Planned (6)

**Other Funding Sources**

- Operational (Creditable Station) (28)

**Alternative Fuel Corridors**

- Interstate
- US Highway



# OPERATIONAL NEVI STATIONS

## PA has the most operational NEVI stations of any state!

- PennDOT's 28 Operational NEVI stations are listed below:

- Pilot Travel Centers – Pittston
- Emlenton Truck Plaza – Emlenton
- Tesla – Aston
- Loves Travel Stops – Jonestown
- Loves Travel Stops – Slippery Rock
- Francis Energy – Chambersburg
- Francis Energy – Carlisle
- Pilot Travel Centers – New Milford
- Pilot Travel Centers – Mill Hall
- Francis Energy – Kylertown
- Loves Travel Stops – Mifflinville

- Tesla – New Castle
- Loves Travel Stops – Brookville
- Tesla – Fort Littleton
- Tesla – Enola
- EVgo – Monroeville
- Tesla – Meadville
- Sheetz – York
- Sheetz – Altoona
- EVgo – Pittsburgh
- Francis Energy – Breezewood
- Tesla – Shrewsbury

- Francis Energy – Mercer
- Francis Energy – Newburg
- Tesla – Somerset
- Applegreen Electric – Newburg
- Sheetz – Sewickley
- Applegreen Electric – New Stanton



# NEVI STATION USAGE DATA

- Cumulative Pennsylvania NEVI station usage data is shown below.
- This data is updated quarterly on the [PennDOT NEVI Homepage](#).

Cumulative PennDOT NEVI Usage Information 12/21/23 to 9/30/25		
EV Charging Sessions	Electricity Dispensed	Estimated CO <sub>2</sub> Emissions Reduced
51,306	2,055,497 kWh	1,313 metric tons

# FULL BUILD OUT CERTIFICATION

## **Pennsylvania's AFCs are Fully Built Out**

- PennDOT submitted its third request for AFC Full Build Out certification on 8/27/25 and received approval on 9/22/25.
- Pennsylvania is the first state to receive AFC Full Build Out certification by following the new NEVI guidance released on 8/11/25, and the second state overall to receive Full Build Out.
- PennDOT now has greater flexibility to invest remaining NEVI funds in public EV charging infrastructure.

# COMMUNITY FRAMEWORK



**Corridor  
Connections**



**Community  
Charging**



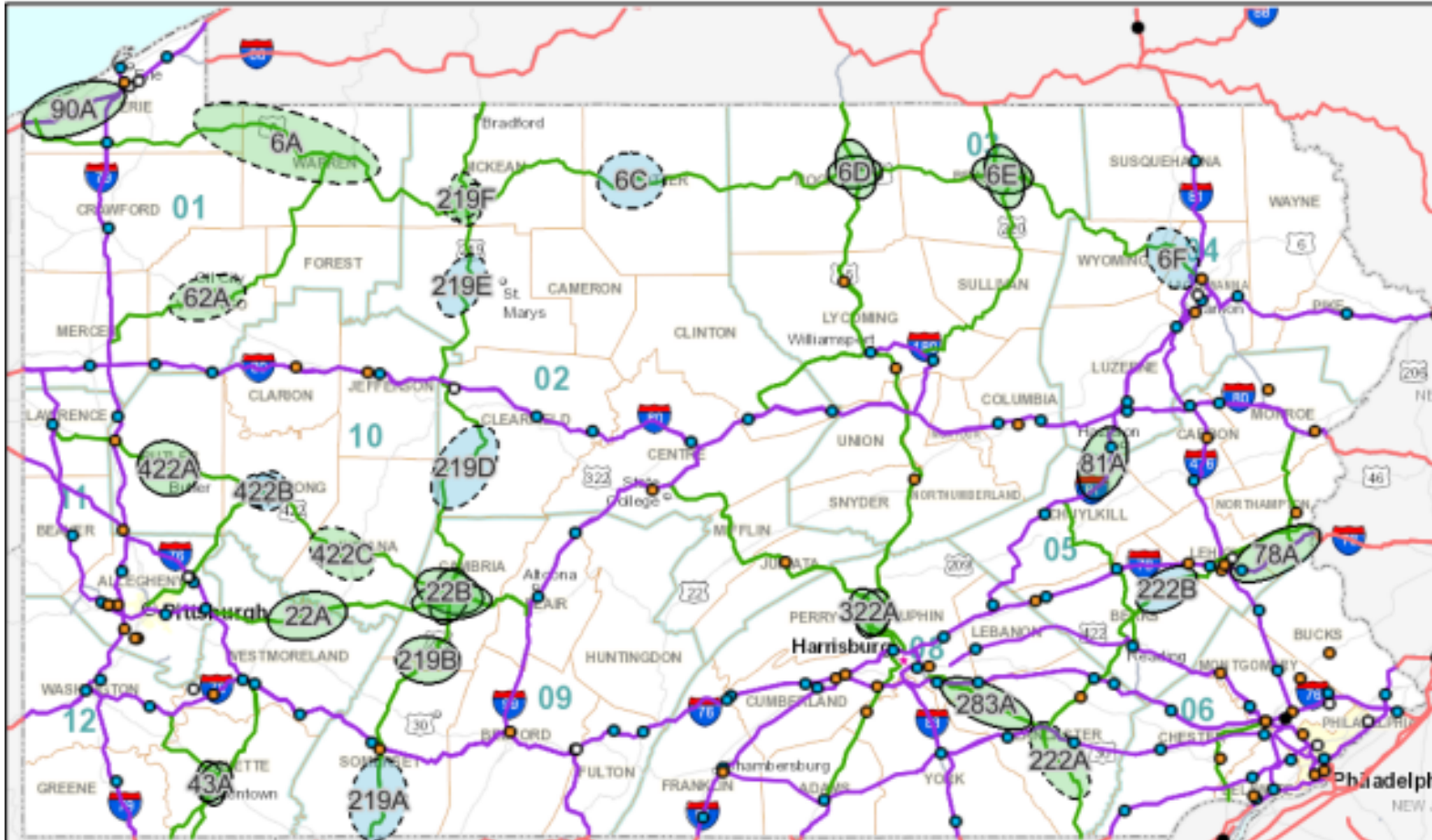
**Critical  
Investments**

## PennDOT NEVI Community Phase Framework

# CORRIDOR CONNECTIONS

- Closed on January 30<sup>th</sup>, 2026.
- Award announcement coming in March or April 2026

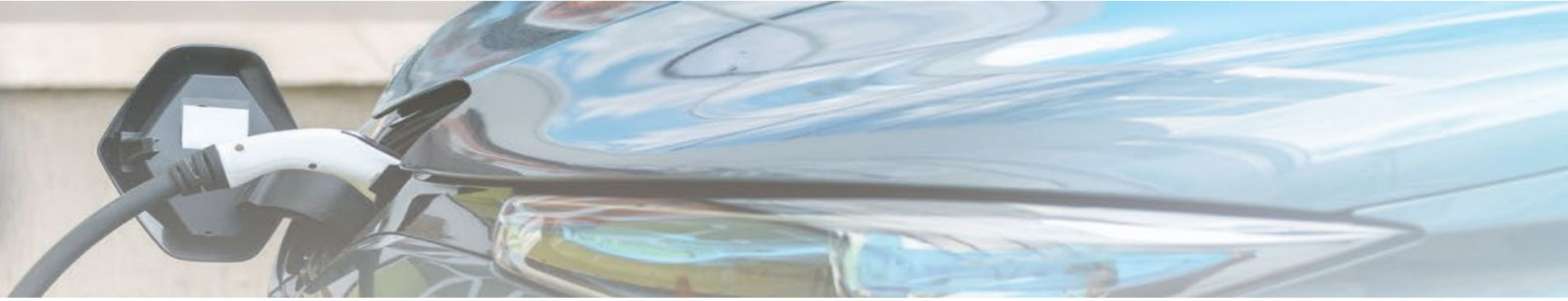
[Corridor Connections Online Interactive Map](#)



Corridor Groups w/ Priority Level and Power Requirement	Existing DCFC Stations (Open or Planned)	Interchanges/ Segments	Routes
<ul style="list-style-type: none"> <li>422A Priority I Standard Power</li> <li>62A Priority I Lower Power</li> <li>222B Priority II Standard Power</li> <li>219D Priority II Lower Power</li> </ul>	<ul style="list-style-type: none"> <li>PA NEVI AFC</li> <li>PA Non-NEVI AFC</li> <li>Other PA DCFC*</li> <li>Out of State DCFC*</li> </ul> <p>*meets at least Lower Power requirements</p>	<ul style="list-style-type: none"> <li>143 Interchange</li> <li>101 Segment^</li> <li>71 Ineligible</li> </ul> <p>^Number shown is nearest mile to midpoint of segment</p>	<ul style="list-style-type: none"> <li>PA Corridor Connection</li> <li>PA AFC</li> <li>Border State AFC</li> </ul>
			Eligibility Polygons
			<ul style="list-style-type: none"> <li>Full Polygon</li> </ul> <p>by Community Needs Score</p> <p>0 4 5 6 7</p>

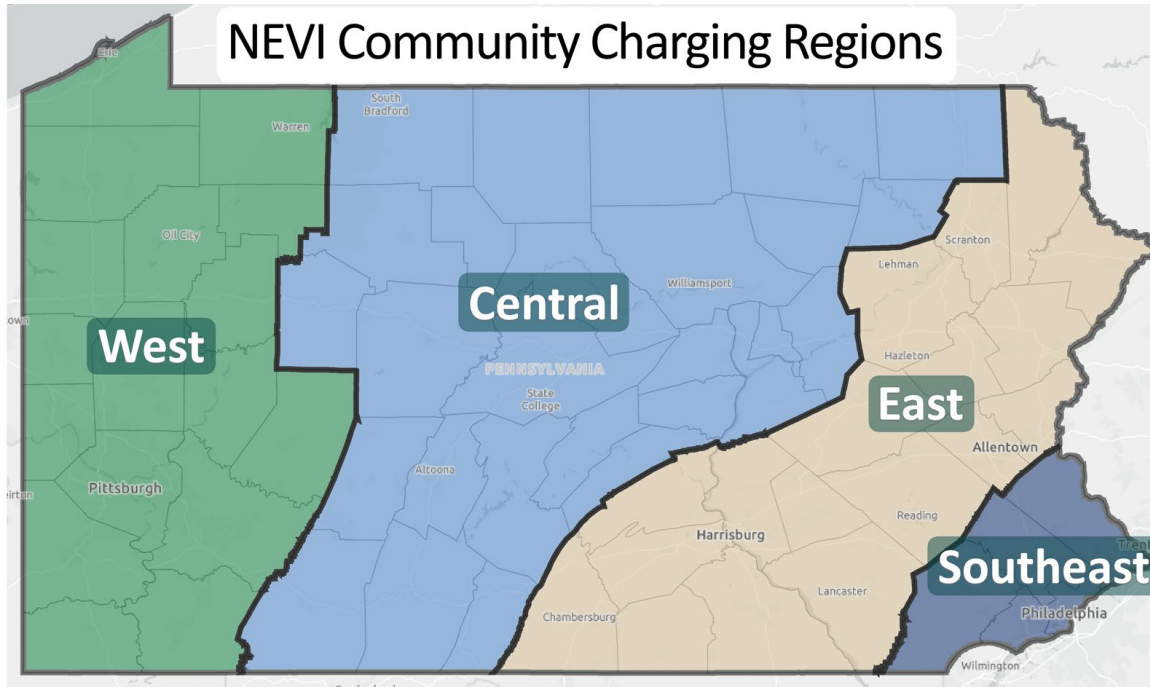


# NEVI COMMUNITY ROUNDS SUMMARY



- PennDOT is investing about \$95 million of NEVI funds in the four regional Community Charging funding rounds.
- All publicly available locations in Pennsylvania will be eligible.
- Any organization registered to do business in PA and not debarred is eligible for funding.
- NEVI can fund up to 80% of the cost to design and install an EV charging station.
- PennDOT is developing priority locations with MPOs/RPOs.

# REGIONS AND TIMELINE



- All publicly available locations within a region are eligible to apply.
- All dates are estimates and are subject to change.
- See the PennDOT [Community Charging Funding Rounds](#) webpage for more information and exact dates as they are available.

	Southeast	West	Central	East
Funding Opportunity Published	February 2026	Apr./May 2026	Aug./Sep. 2026	Aug./Sep. 2026
Deadline to Submit Proposals	August 2026	Nov./Dec. 2026	Mar./Apr. 2027	Mar./Apr. 2027
Award Announcements	Oct./Nov. 2026	Feb./Mar. 2027	June/July 2027	June/July 2027



# NEXT STEPS

- Any organization that it is interested in being part of a NEVI project may complete the Interested Parties' Directory Survey.
  - Completed responses will be made available on PennDOT's website.
- Review the Community Charging Funding Opportunities and other resources on PennDOT's [Community Charging Funding Rounds](#) webpage.
- Contact [ra-pdevcorridors@pa.gov](mailto:ra-pdevcorridors@pa.gov) to sign up for the NEVI announcements email list.
- Share the word with others! This is a one-time opportunity for any organization seeking EV charging funds.



# CRITICAL INVESTMENTS: \$7-10 MILLION

- The goal of the Critical Investments Focus Area is to fund important charging locations and types that may not be adequately addressed in the other focus areas.
- Examples could include:
  - EV charging stations for commercial medium- and heavy-duty vehicle charging
  - EV charging stations at PennDOT park-and-ride facilities
  - EV charging workforce development initiatives
  - EV charging stations at state owned public facilities (e.g., state parks, CareerLink locations)



# COMMUNITY FRAMEWORK



**Corridor  
Connections**

\$15-\$20 million



**Community  
Charging**

\$90-\$95 million



**Critical  
Investments**

\$7-\$10 million

[PennDOT NEVI Community Phase Framework](#)

# ELECTRIC CONSTRUCTION EQUIPMENT

- PennDOT was awarded a Department of Energy grant to deploy and demonstrate electric construction equipment on highway projects.
- PennDOT has purchased an electric backhoe, an electric roller, and a mobile battery unit.
- We will share lessons learned and engage stakeholders throughout the demonstration phase and final reporting.



# CONTACT INFORMATION

PENNDOT NEVI TEAM CONTACT:  
RA-PDEVCORRIDORS@PA.GOV



Pennsylvania  
Department of Transportation