



STATE TRANSPORTATION COMMISSION MAY 2026 MEETING

DISTRICT 8 UPDATE

DISTRICT LEADERSHIP



Kevin M. Keefe, P.E.
District Executive

717-783-3848

kkeefe@pa.gov



Richard A. Reisinger, P.E.
Assistant District Executive for Design

717-772-0032

ricreising@pa.gov



Michael E. Reeder, P.E.
Assistant District Executive
for Construction

717-775-8642

mikreeder@pa.gov



David Shearer
Assistant District Executive for
Maintenance

717-787-4803

davshearer@pa.gov

DISTRICT AT A GLANCE



**EIGHT
COUNTIES**



3,422 BRIDGES



**5,174 MILES
OF ROADWAY**



**SIX PLANNING
PARTNERS**



**1,110
EMPLOYEES**



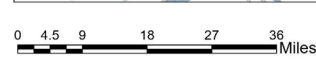
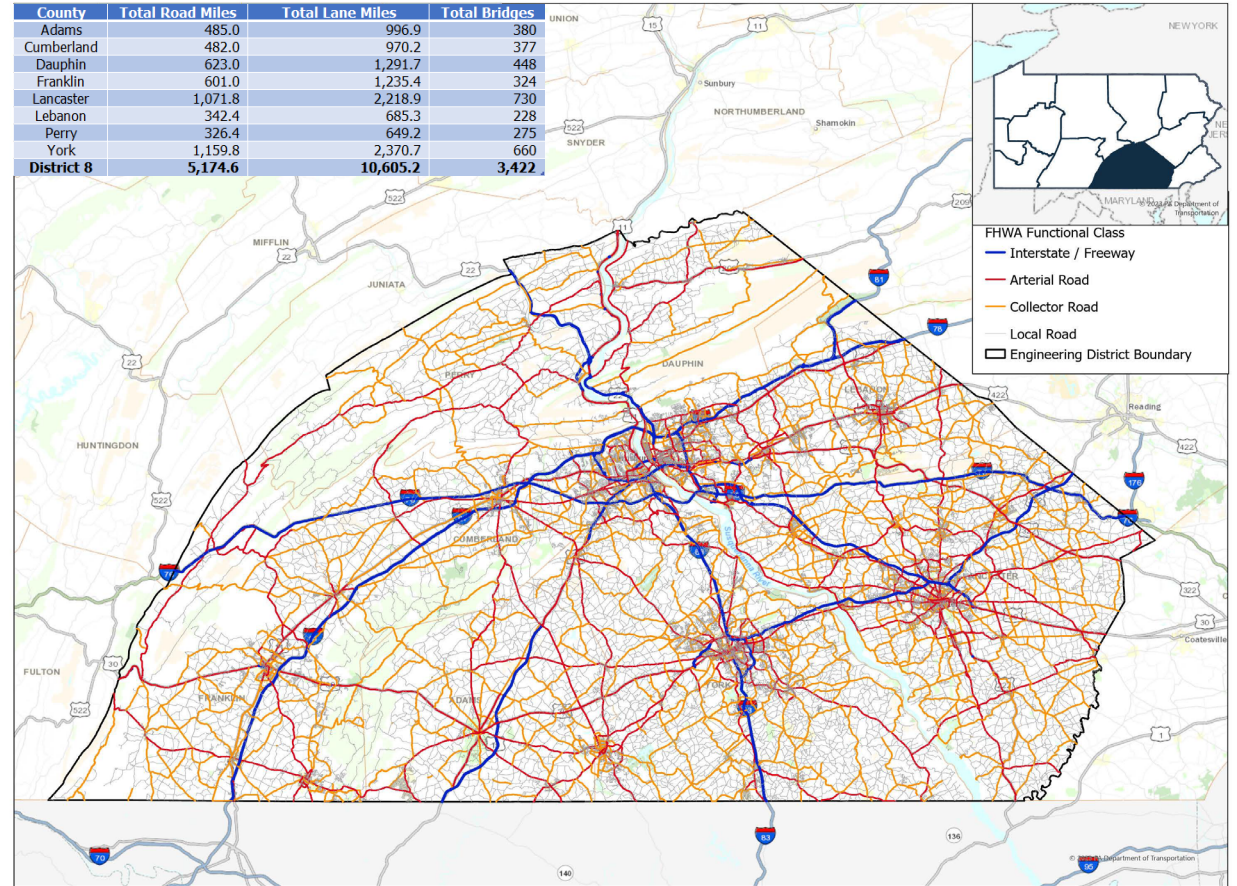
**316
MUNICIPALITIES**



**91 PUBLIC
SCHOOLS**

Engineering District 8 Transportation Network

County	Total Road Miles	Total Lane Miles	Total Bridges
Adams	485.0	996.9	380
Cumberland	482.0	970.2	377
Dauphin	623.0	1,291.7	448
Franklin	601.0	1,235.4	324
Lancaster	1,071.8	2,218.9	730
Lebanon	342.4	685.3	228
Perry	326.4	649.2	275
York	1,159.8	2,370.7	660
District 8	5,174.6	10,605.2	3,422



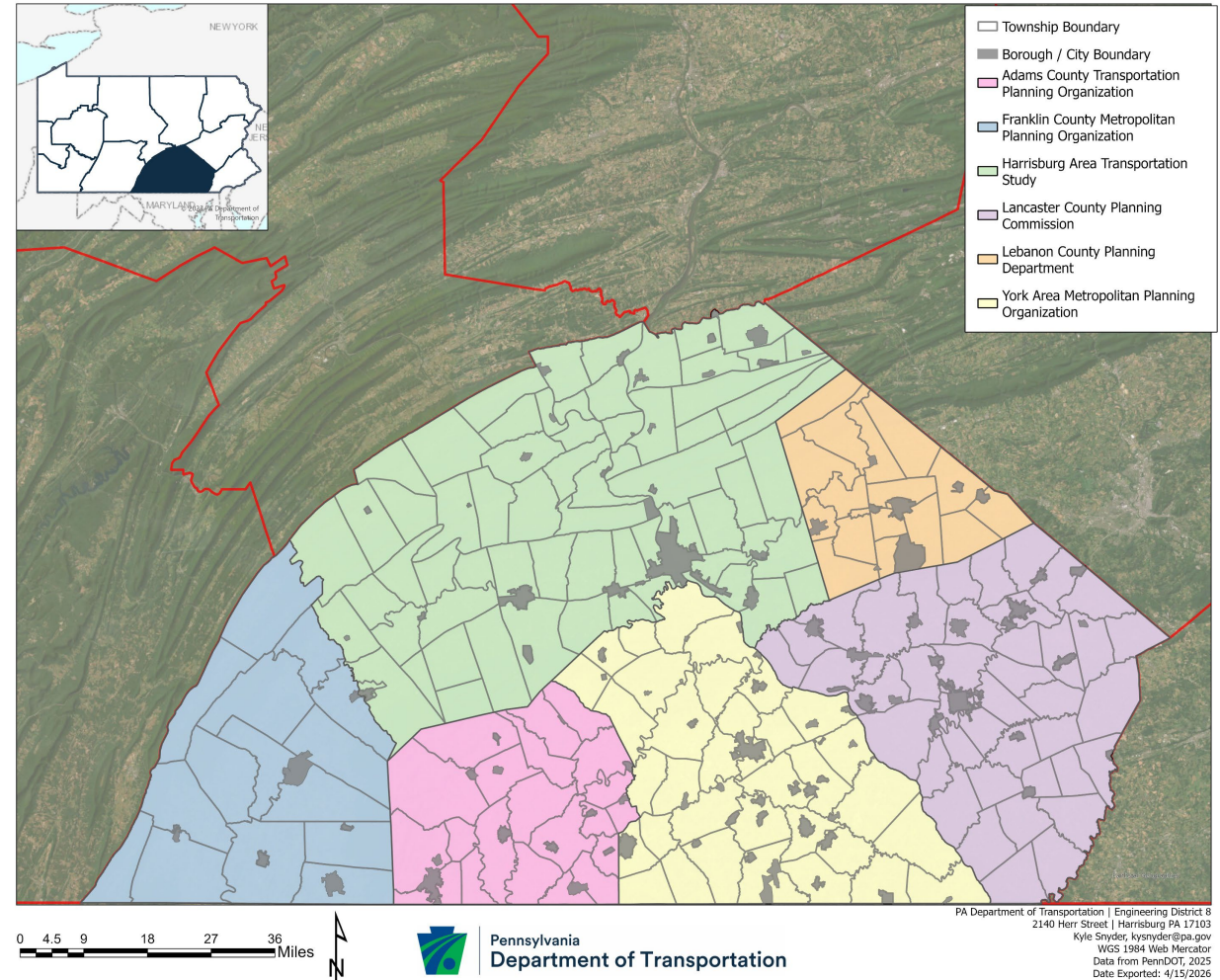
Pennsylvania Department of Transportation

PA Department of Transportation | Engineering District 8
2140 Herr Street | Harrisburg PA 17103
Kyle Snyder, kysnyder@pa.gov
WGS 1984 Web Mercator
Data from PennDOT, 2025
Date Exported: 10/21/2025

PLANNING PARTNERS

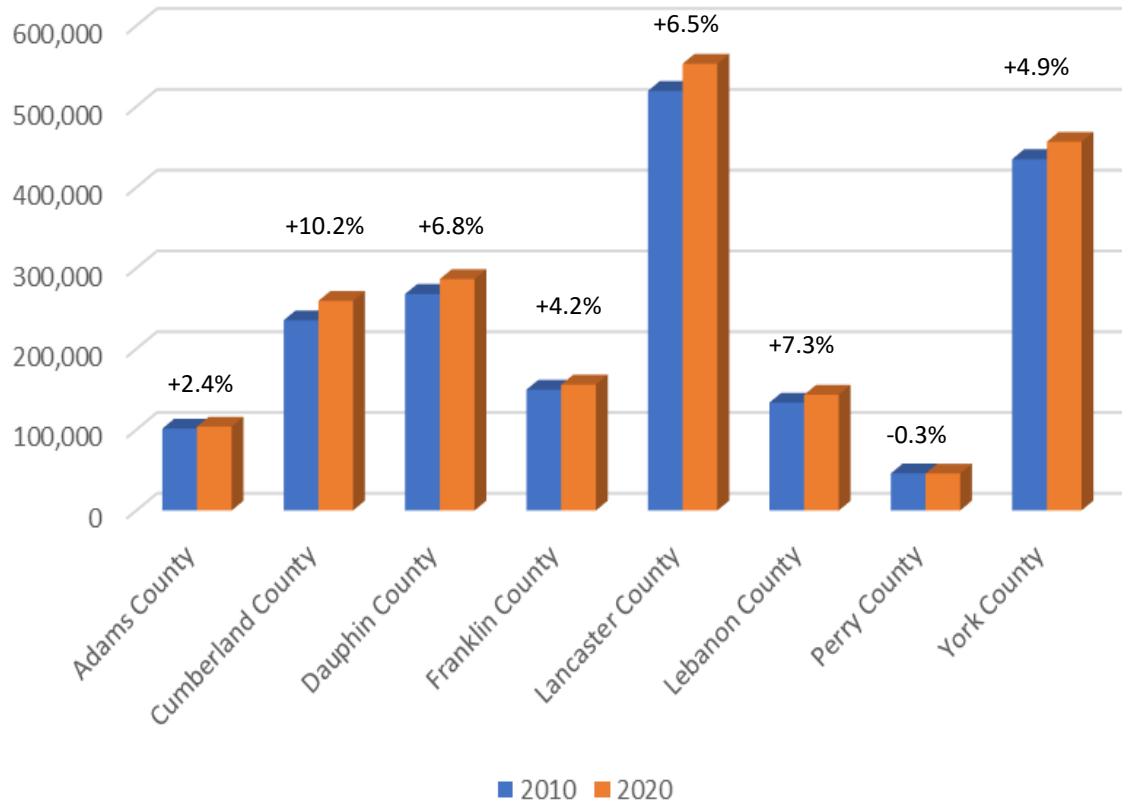
- District 8 has the highest number of planning partners of all the districts.
- Adams County MPO
- Franklin County MPO
- Harrisburg MPO
 - Cumberland, Dauphin, and Perry Counties
- Lancaster MPO
- Lebanon MPO
- York MPO

District 8 Planning Partners

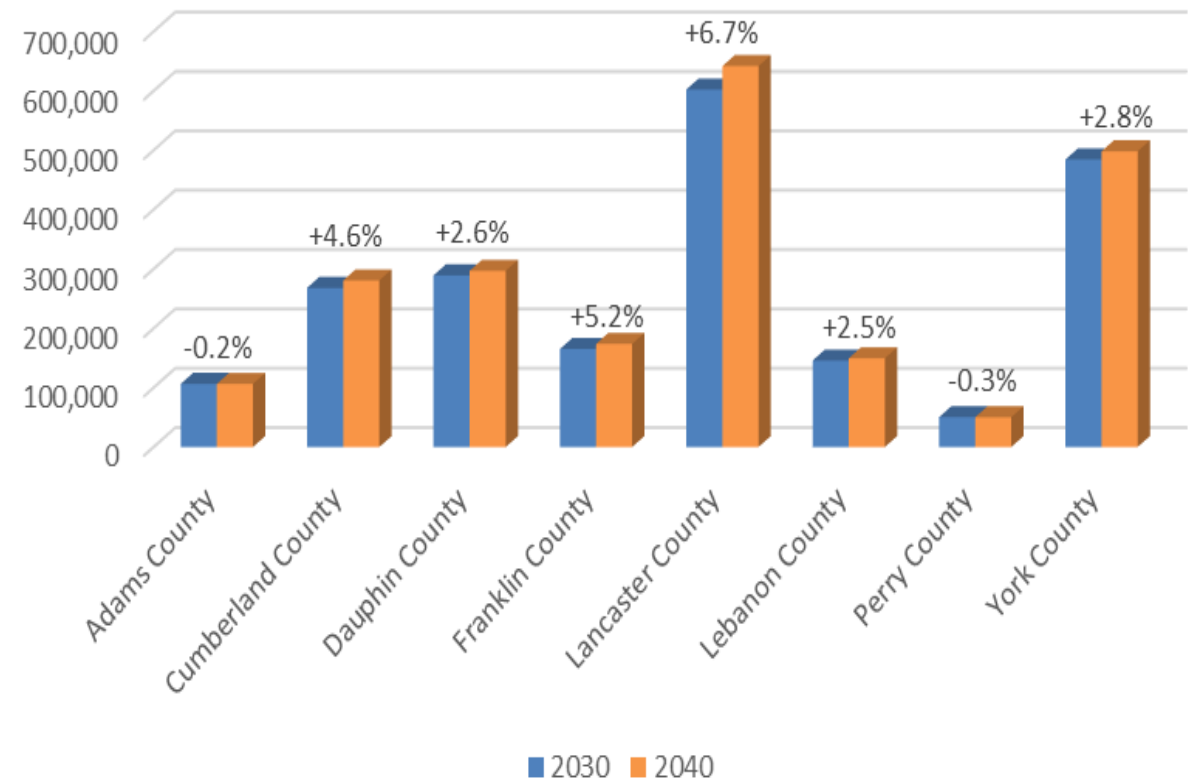


POPULATION TRENDS

District 8-0 Population Changes from 2010-2020

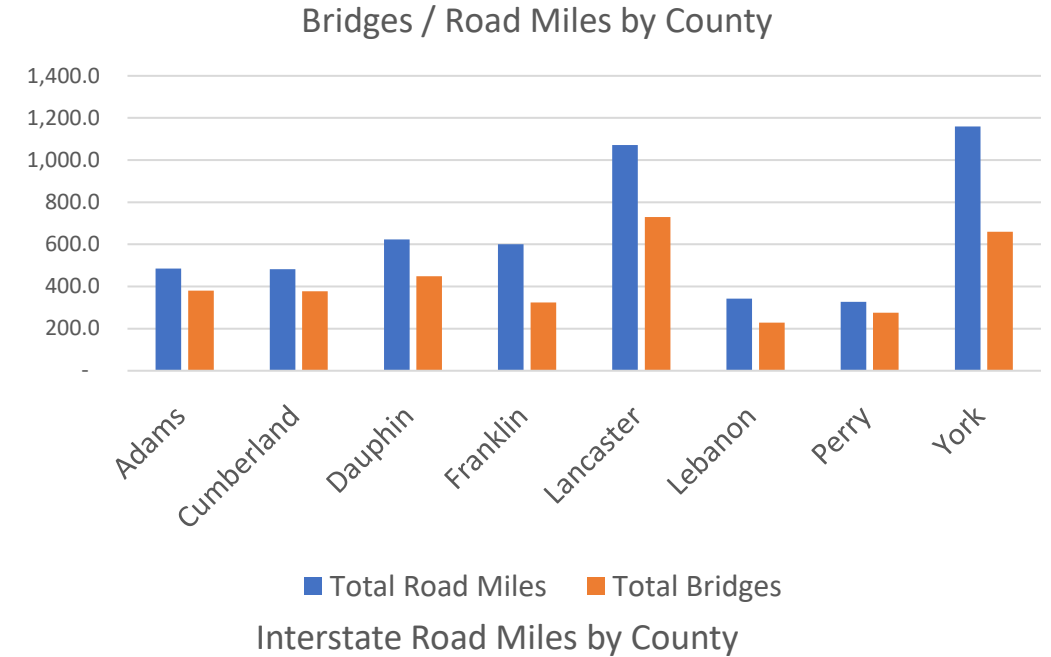


Population Projections 2030 and 2040



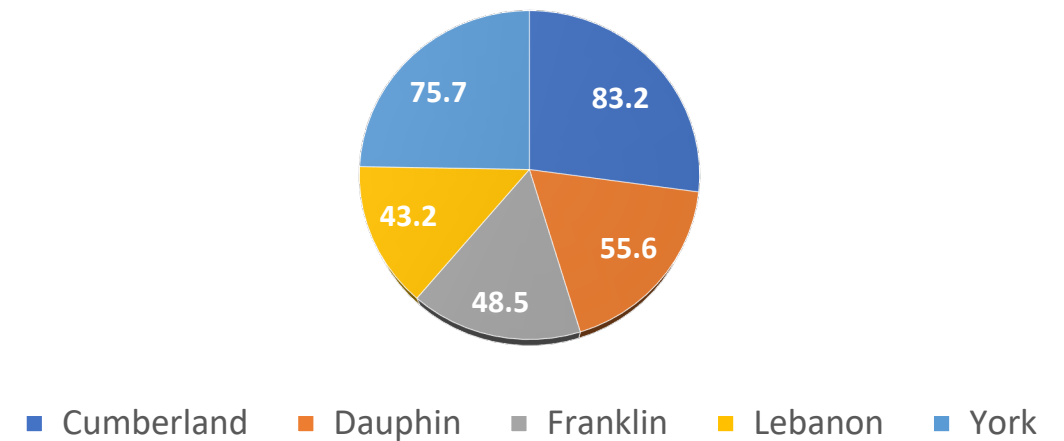
ROADWAY STATISTICS

County	Total Road Miles	Total Lane Miles	Total Bridges
Adams	485.0	996.9	380
Cumberland	482.0	970.2	377
Dauphin	623.0	1,291.7	448
Franklin	601.0	1,235.4	324
Lancaster	1,071.8	2,218.9	730
Lebanon	342.4	685.3	228
Perry	326.4	649.2	275
York	1,159.8	2,370.7	660
District 8	5,174.6	10,605.2	3,422



Interstate Miles by County Within the District

County	Total Road Miles	Percent of Road Miles
Cumberland	83.2	27%
Dauphin	55.6	18%
Franklin	48.5	16%
Lebanon	43.2	14%
York	75.7	25%
District 8	306.3	



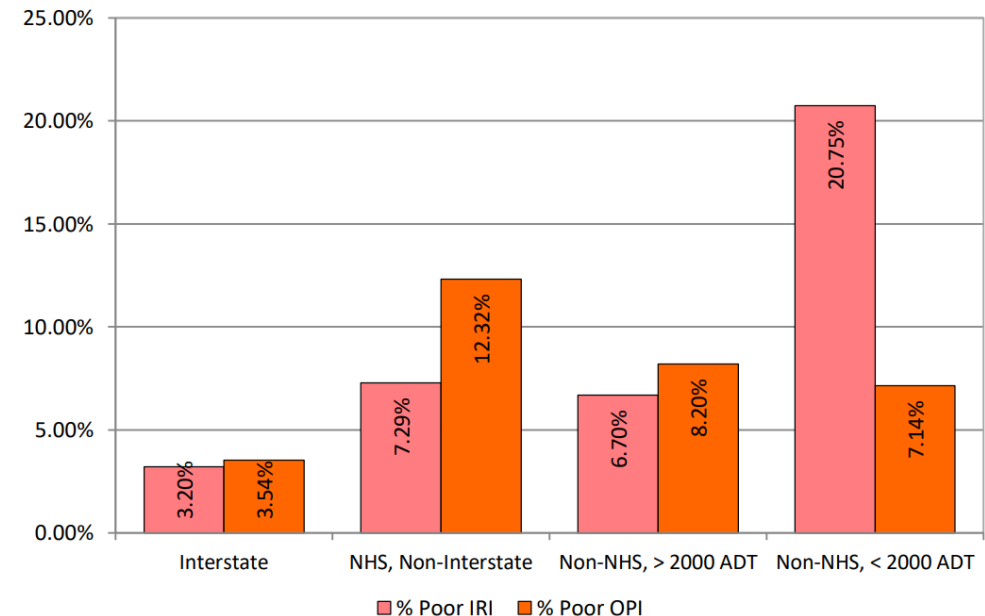
ASSET MANAGEMENT - PAVEMENT

- Pavement asset management needs in the District remain high.
- Asset management candidates are developed through a collaborative process at the District and presented to the MPOs.
- Focus on lowest lifecycle cost with highway preservation contract, crack-sealing contracts in place for interim treatments.
- Labor and material price inflation has reduced the buying power for allocated budgets.

2024 MAP-21 Pavement Performance and Annual Targets by Business Plan Network (Based on Total PA Lane Miles*)

MAP-21 Pavement Performance Measures	Good		Fair		Poor		Missing (Max 5%)	
	Lane Miles	%	Lane Miles	%	Lane Miles	%	Lane Miles	%
Interstate	476.6	70.91%	189.3	28.17%	6.2	0.92%	5.1	0.75%
NHS, Non-Interstate	794.8	44.86%	930.9	52.54%	46.0	2.60%	39.9	2.20%
MAP-21 Pavement Performance Measure Targets	Good				Poor			
	2025 Target	2026 Target	2027 Target	2028 Target	2025 Target	2026 Target	2027 Target	2028 Target
Interstate	67%	67%	69%	69%	2%	2%	2%	2%
NHS, Non-Interstate	41%	41%	41%	37%	6%	5%	5%	4%

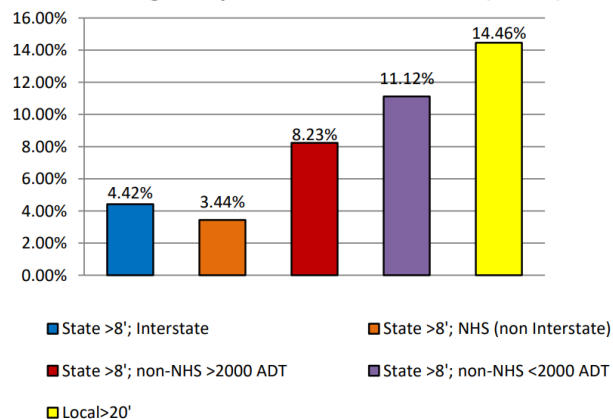
Percent of Poor IRI and Poor OPI by Business Plan Network



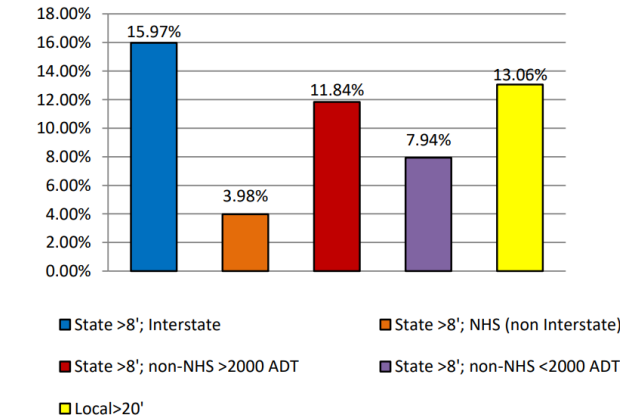
ASSET MANAGEMENT - BRIDGES

- Bridge asset management needs remain high in the District.
- Bridge candidates are identified through BridgeCare/BAMS and presented to the MPOs for consideration.
- TIP funded bridge repair contracts (BRC) and maintenance-funded Bridge Maintenance Contracts.

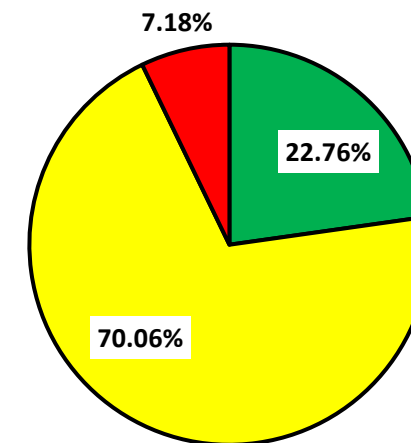
Poor Bridge % by Business Plan Network (Count)



Poor Bridge % by Business Plan Network (Deck Area)



MAP-21 Bridge Performance (By Deck Area)*



■ Good ■ Fair ■ Poor

*Based on all NHS Bridge Owners Greater than or Equal to 20' in Length

PROJECTS IN CONSTRUCTION

CONSTRUCTION ACCOMPLISHMENTS

2024

119 Active Projects

50 Projects Completed

27 Bridges Repaired/Replaced

171 Lane Miles Paved



2025

111 Active Projects

53 Projects Completed

32 Bridges Repaired/Replaced

147 Lane Miles Paved

US-11 NB OVER THE CONODOGUINET CREEK

- ECMS: 99678
- Let Date: 10/24/2024
- Completion Date: 6/22/2027
- Contractor: JVI Group Inc.
- Contract Value: **\$5,247,171.55**
- Project Description:
 - Bridge rehabilitation on US Route 11 over Conodoguinet Creek
 - Located in Wormleysburg Borough and East Pennsboro Township, Cumberland County.



US-222/US-30 INTERCHANGE

- ECMS: 97013
- Let Date: 07/13/2023
- Completion Date: 9/3/2027
- Contractor: J.D. Eckman Inc.
- Contract Value: **\$72,173,900.21**
- Project Description:
 - Improvements on US-30 interchange ramp with widening and reconstruction to accommodate two lane ramps between US-30 and US-222.
 - US-222 overhead ramp bridge was replaced, and Eden Road bridge was rehabilitated.
 - Located in Manheim Township, Lancaster County.



I-83 EAST SHORE SECTION 3

- ECMS: 113357
- Let Date: 9/11/2025
- Completion Date: 10/18/2033
- Contractor: J.D. Eckman Inc.
- Contract Value: **\$132,727,725.31**
- Project Description:
 - Constructed additional lanes on I-83 from SR 0230 (Cameron Street) to about 1500' west of SR 3013 (29th Street) overpass and along the SR 3010 (Paxton Street) and 17th Street corridors.
 - This project includes structure replacements.
 - Located in Swatara Township and City of Harrisburg, Dauphin County



PA-997 ROUNDABOUTS

- ECMS: 106709
- Let Date: 01/16/2025
- Completion Date: 8/22/2028
- Contractor: Mitchell Knorr Contracting
- Contract Value: **\$6,224,217.92**
- Project Description:
 - Installation of two roundabouts at the intersection of PA-997 and SR 2015 (Tomstown Road) and the intersection of PA-997 and Washington Township Boulevard.
 - Located in Washington Township, Franklin County.



ARSENAL ROAD RESURFACING 2

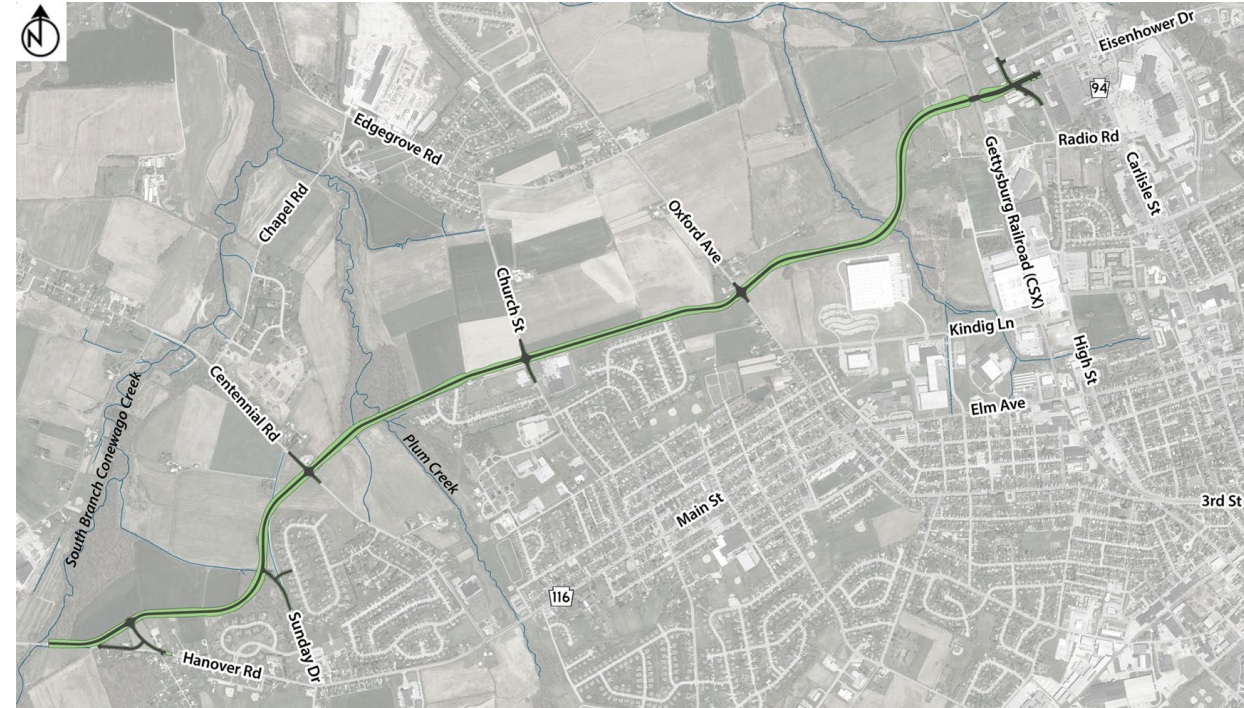
- ECMS: 116116
- Let Date: 06/5/2025
- Completion Date: 12/21/2027
- Contractor: New Enterprise Stone & Lime Co., Inc.
- Contract Value: **\$15,475,000.00**
- Project Description:
 - Resurfacing of US-30 from Kreutz Creek Exit to Wrights Ferry Bridge.
 - Included the preservation of three bridges.
 - Located in Hellam Township, York County.



PROJECTS IN DESIGN

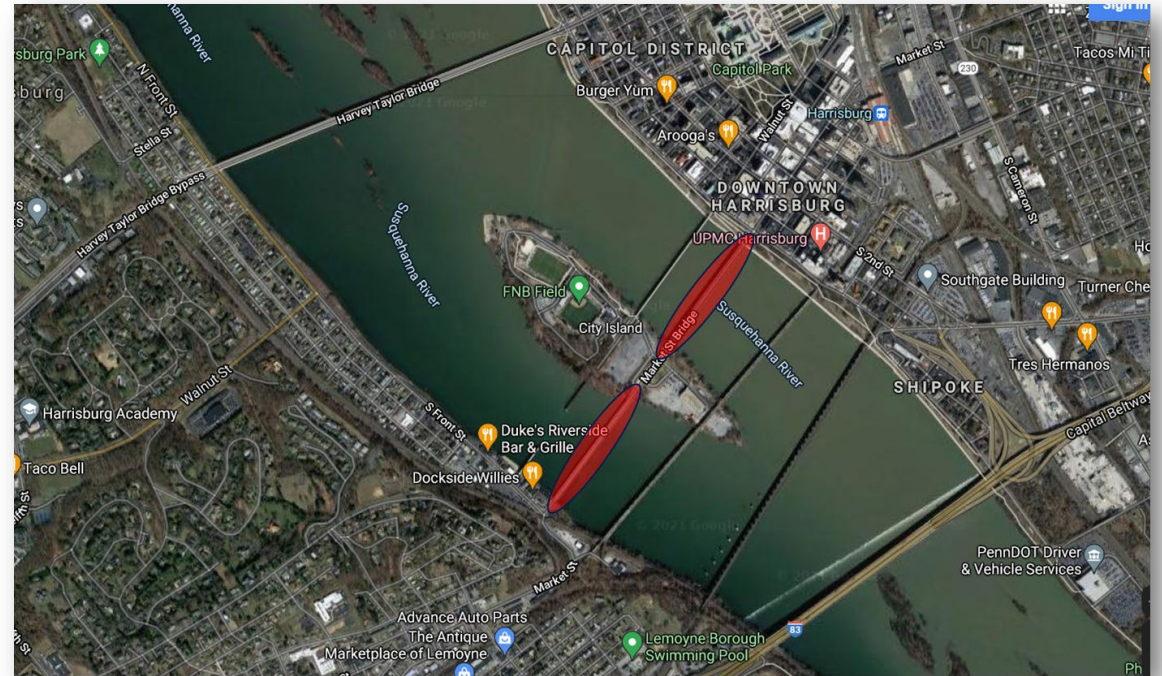
EISENHOWER DRIVE EXTENSION

- Project includes construction of a new roadway alignment to extend Eisenhower Drive west and connecting it to PA 116, west of McSherrystown.
- Currently in final design phase and ROW acquisitions are underway
- To be let in 2027 with an estimated construction cost over **\$70M**



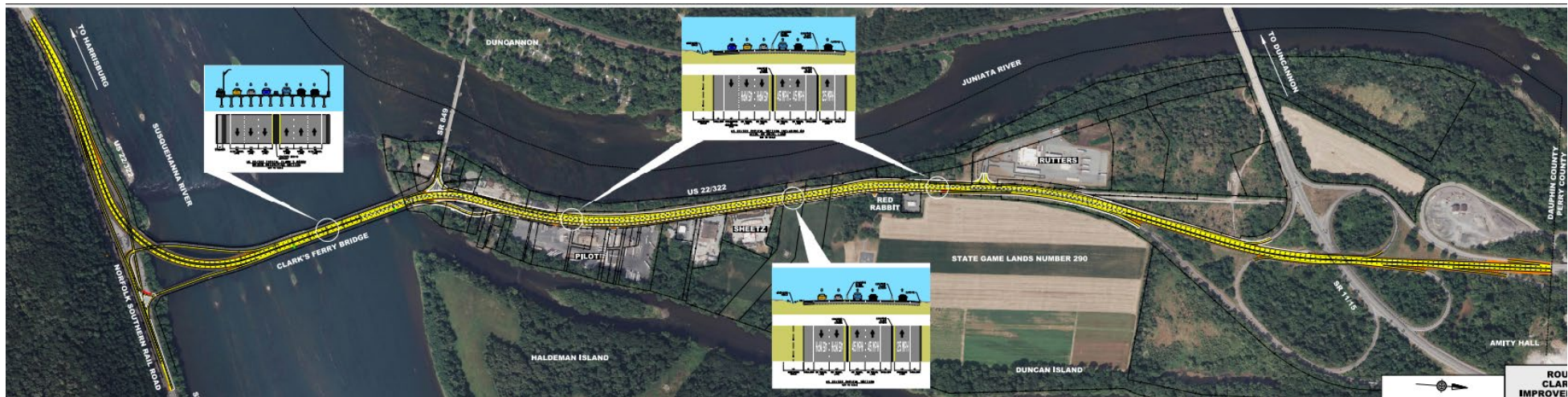
MARKET STREET BRIDGE

- Two bridge spans between Harrisburg and Wormleysburg.
- East span is historic and will be rehabilitated.
- West span is a superstructure replacement.
- The project includes a new adjacent utility bridge with bike/ped accommodations.
- To be let in 2027, with an estimated construction cost over **\$120M**



RIVERLANDS SAFETY PROJECT

- Bridge preservation work on the Clarks Ferry Bridge and the Juniata River Bridge (PA-849) along with corridor safety improvements.
- Quick-curb delineators previously placed throughout corridor will be replaced by permanent concrete barriers to eliminate turning movements.
- To be let in late 2028 with an estimated construction cost over **\$60M.**



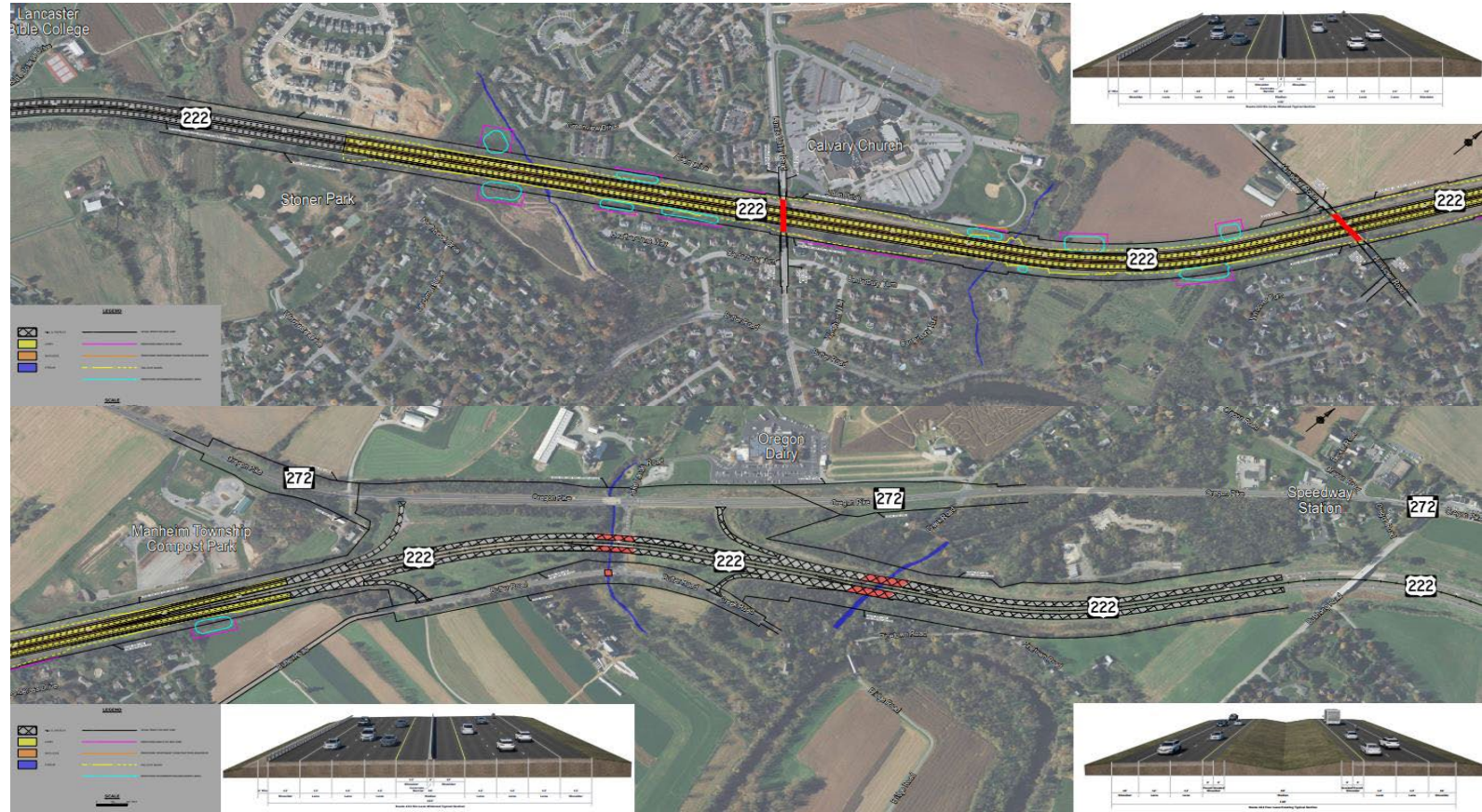
I-81 EXIT 12 CONSTRUCTION

- Construction of new interchange at Guilford Springs Road which will become the new Exit 12.
- Two Multimodal Transportation Fund (MTF) projects have been awarded nearby to facilitate freight movement between local development and proposed interchange.
- Being let this this summer with an estimated construction cost over **\$40M.**



US-222 RECONSTRUCTION

- Project includes full depth reconstruction and widening, and pavement preservation from the northern limit of the existing US-222/US-30 project to area of the Jake Landis Exit.
- To be let in 2028 with an estimated construction cost over **\$70M**.



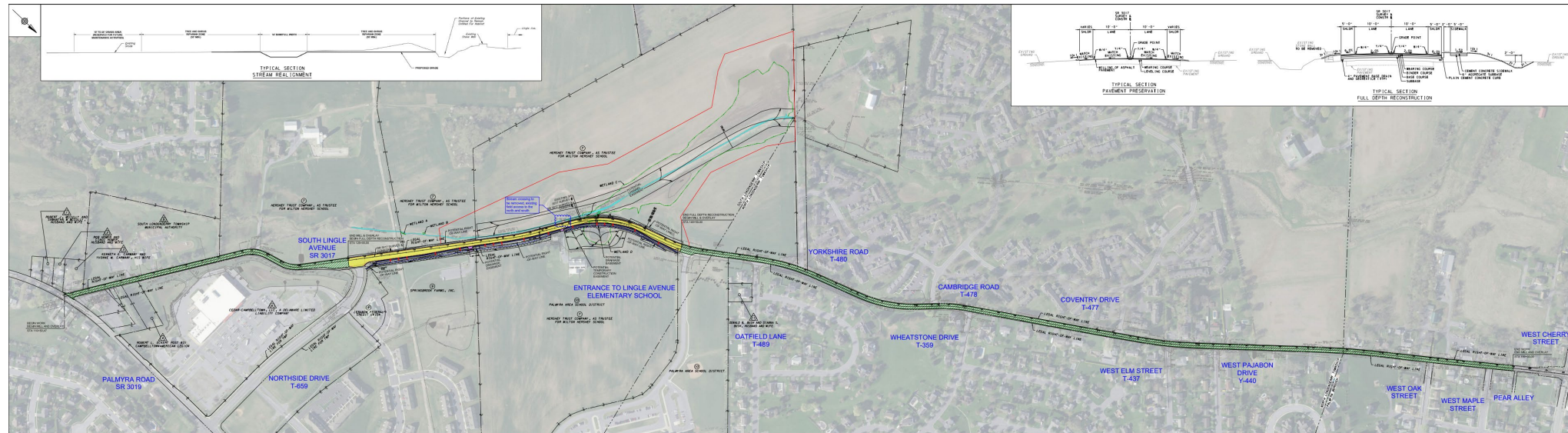
COLUMBIA-WRIGHTSVILLE BRIDGE

- Major bridge rehab, with an estimated construction value over **\$200M**.
- Improvement for bicyclists and pedestrians accessing nearby trails and parks.
- Improving traffic conditions in Wrightsville at PA-462/PA-624 with roundabout construction.
- Anticipated to be let in late 2027 pending T&E species coordination (Bats)



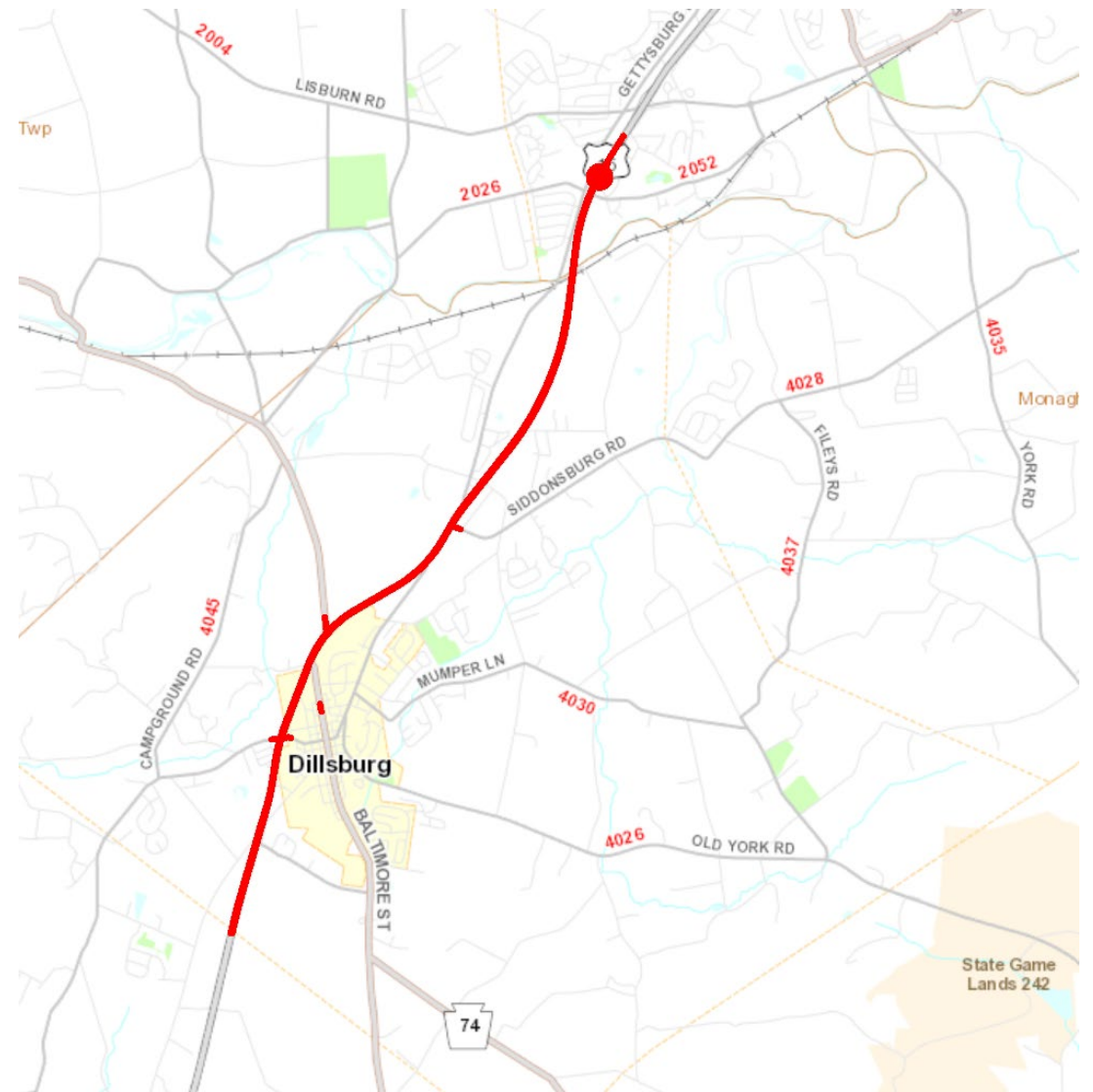
LINGLE AVE RECONSTRUCTION

- Project includes drainage improvements, stream restoration, roadway resurfacing, realignment, and select location shoulder widening of SR 3017 (Lingle Road) from Cherry Street to SR 3019 (Palmyra Road).
- This project will raise the road to reduce flooding events, while also relocating the stream further away from the road.
- To be in let in 2027 with an estimated construction cost of **\$5.8M.**

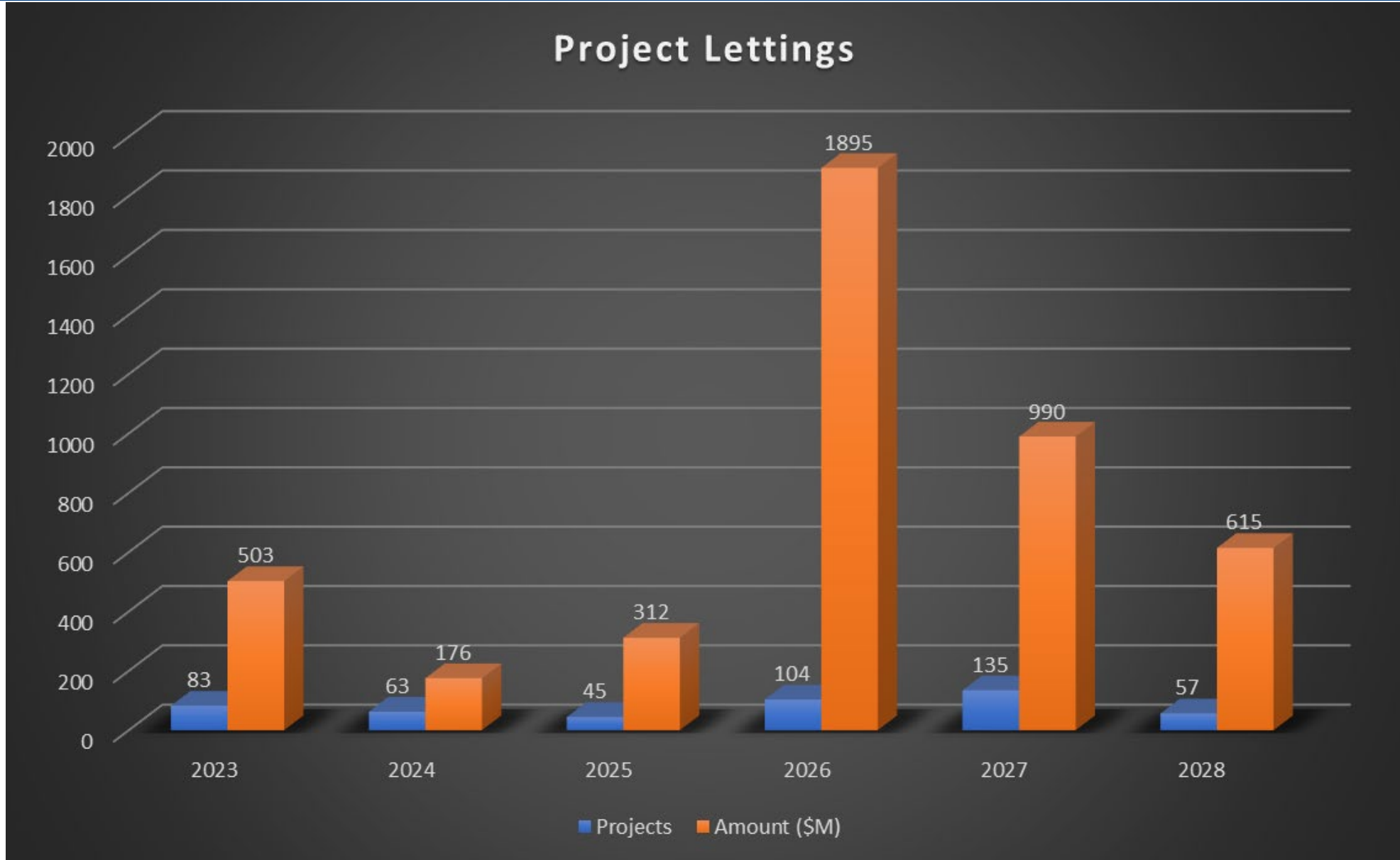


US-15 RECONSTRUCTION

- Reconstruction of US-15 from Range End Road/Golf Course Road north into Cumberland County.
- Project includes a bridge improvement of bridge over Yellow Breeches Creek.
- To be let in late 2028 with an estimated construction cost of **\$110M**



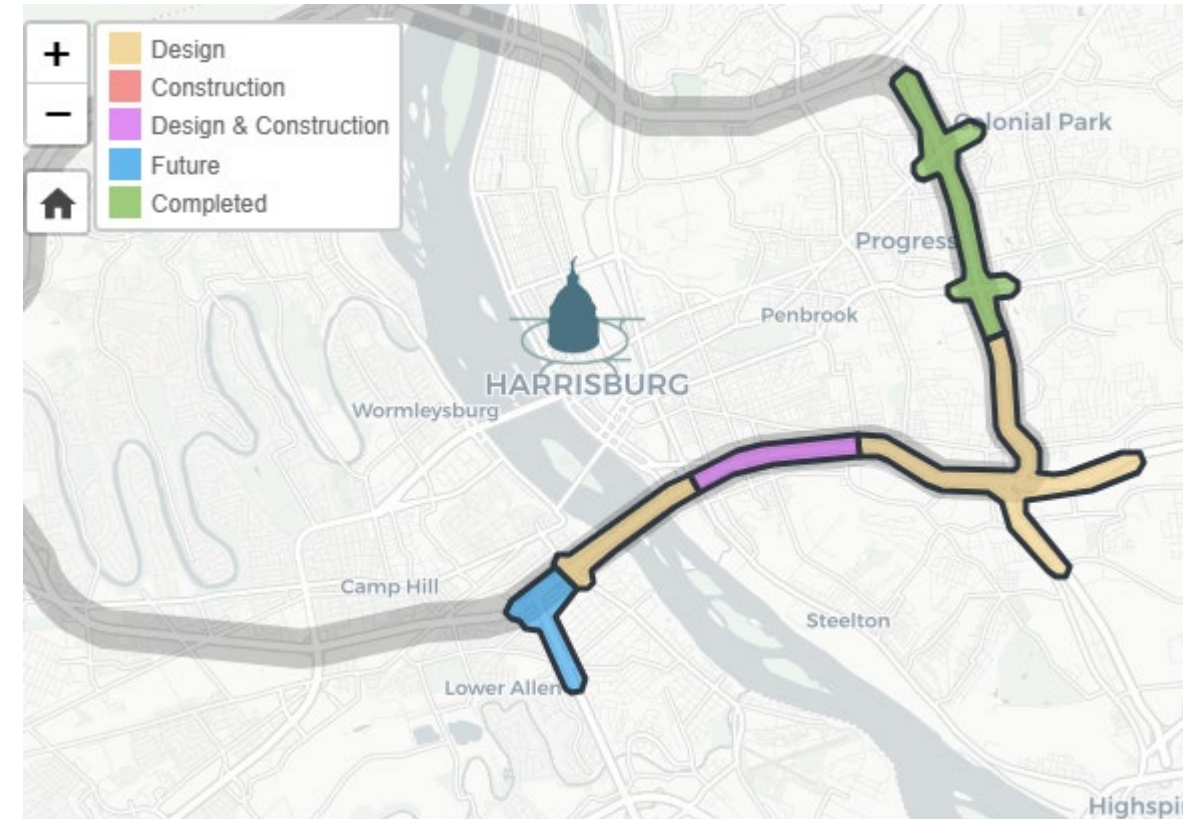
DISTRICT LETTINGS



INTERSTATE PROJECTS

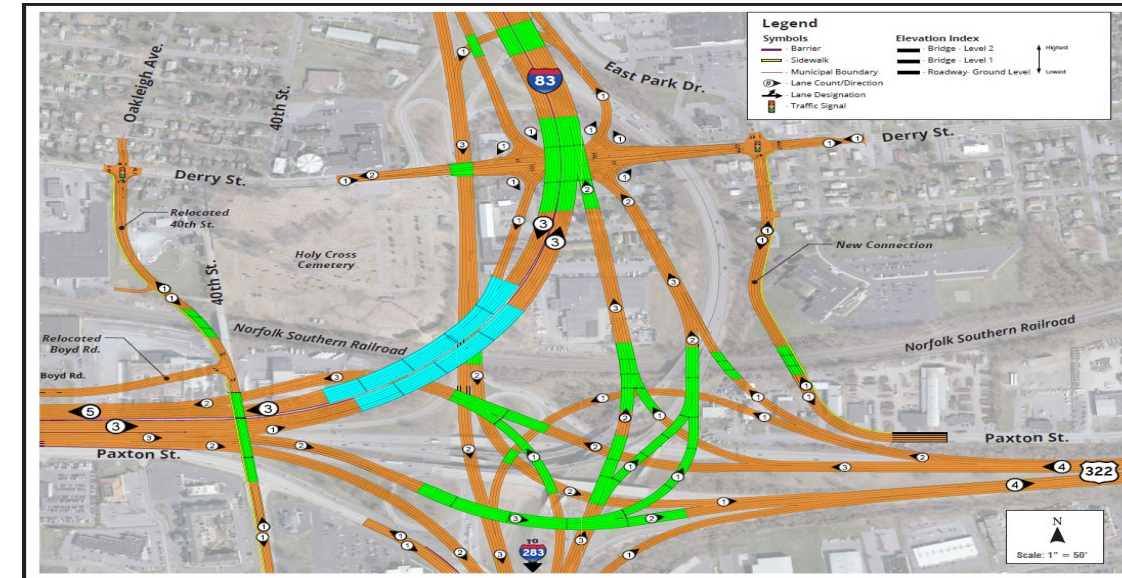
I-83 CAPITAL BELTWAY MASTER PLAN

- Long term implementation of interstate improvements:
 - I-83 East Shore Section 1 - **Complete**
 - I-83 East Shore Section 2 - **Planned**
 - I-83 East Shore Section 3 - **Underway**
 - I-83 South Bridge Replacement – **Planned**
 - I-83 West Shore Section – **Not funded**



I-83 EAST SHORE SECTION 2

- Broken into 5 projects for implementation:
- **Section 078** – First contract for the interchange local road improvements/connections, over **\$200M** con estimate, to be let late 2027
- **Section R78** – Railroad bridge replacement at Eisenhower Blvd, **\$40M** con estimate, to be let in 2029
- **Section B78** – North leg of 83, South I-283, East 322, & mainline new flyover bridges, **\$200M** con estimate, to be let in early 2031
- **Section C78** – 29th street to Eisenhower Interchange and mainline bridge tie-in, over **\$300M** con estimate, to be let late 2031
- **Section D78** – Interchange ramps "spaghetti bowl" reconfigurations and tie-in to final, **\$400M** con estimate, to be let summer 2034
- These 5 projects have a total of 63 structures:
 - 29 Bridges
 - 23 Sound Walls
 - 7 Culverts
 - 4 Noisewalls



I-83 SOUTH BRIDGE

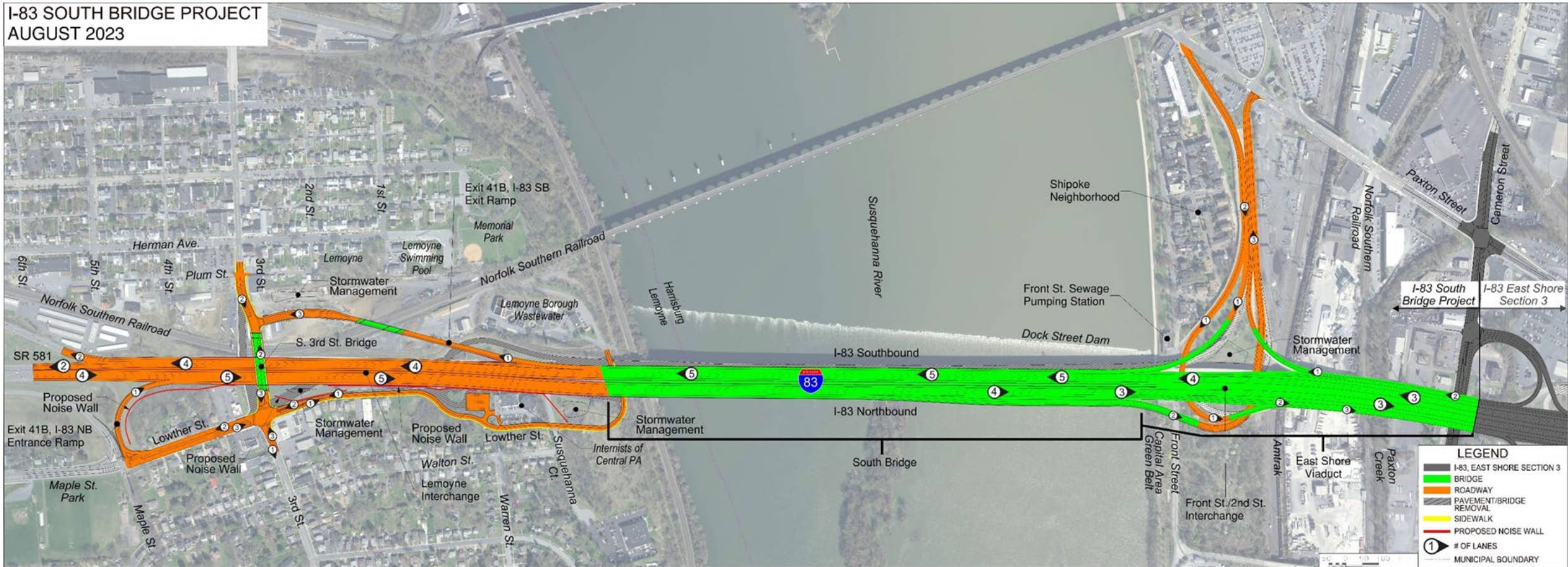
- Project includes the east shore viaduct (river to new Cameron St exit) and the reconfiguration of the west shore Lemoyne/New Cumberland Exit and 3rd Street bridge.
- Replacing aging structure which was constructed in 1960 and has an AADT of 125,000 vehicles.
- To be let in Summer 2026 with an estimated construction cost exceeding **\$1 Billion**.



Source: [York Daily Record](#)

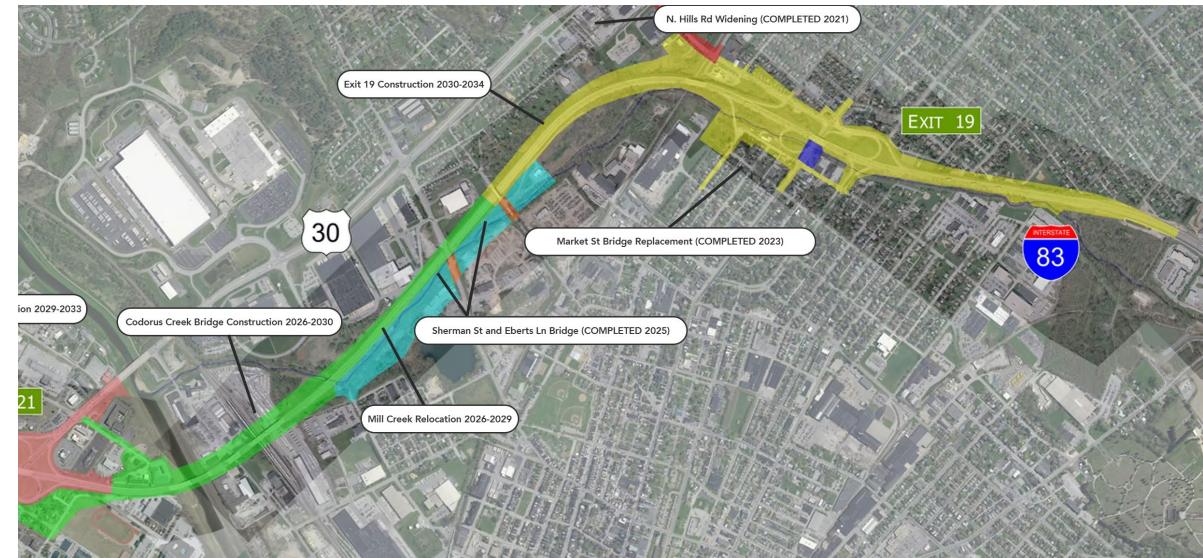
I-83 SOUTH BRIDGE DESIGN

I-83 SOUTH BRIDGE PROJECT
AUGUST 2023



I-83 NORTH YORK WIDENING

- **Sections 090/091** include the Mill Creek Stream Relocation and the Codorus Creek Bridge project with **\$200M** construction estimate and will be let in Summer 2026.
- **Section 070** the "northern" end of project (Exit 21/22), **\$150M** construction estimate, planned to be let in 2028/2029
- **Section 092** the "Southern" end (Exit 19), **\$200M** construction estimate, planned to be let in 2030/2031



MAINTENANCE INNOVATIONS

MAINTENANCE CHALLENGES

- Funding remains a challenge
 - Budgets are relatively flat
 - Personnel and operation costs increase
 - Equipment costs increase
- Staffing shortages
- Aging facilities



MAINTENANCE INNOVATION

- Highway Preservation Contract
 - Maintenance funded contract for sinkhole and roadway repairs throughout the District.
- Bridge Maintenance Contract
- Department Force Box Culverts
 - Using TIP funds to cover design and materials
 - Department Force labor for construction
- TIP Funded Bridge Repair Contracts
 - Focused on preservation activities for structures in respective MPO regions.

FOLLOW PENNDOT



www.pa.gov/penndot



www.pa.gov/dmv



PennsylvaniaDepartmentofTransportation



PennDOTNews



PennsylvaniaDOT



PennDOTSec



[/company/PennDOT](https://www.linkedin.com/company/PennDOT)



PennDOTSec



PennsylvaniaDOT



Pennsylvania
Department of Transportation

TRUCK PARKING PLANNING AND EXPANSION ACTIVITIES UPDATE



STC MEETING

MAY 13, 2026

DAN FARLEY, PE

MARK TOBIN

TRUCK PARKING PLANNING AND EXPANSION UPDATE



Source: FHWA



PART 1 - PLANNING INITIATIVES & COORDINATION



PENNSYLVANIA STATE TRANSPORTATION ADVISORY
COMMITTEE

TRUCK PARKING IN PENNSYLVANIA



FINAL REPORT
DECEMBER 2007

Expanding Truck Parking in Pennsylvania



Drone view of I-81 rest area, Mountaintop, PA, courtesy of Northeastern Pennsylvania Alliance



Pennsylvania
Transportation Advisory Committee

December 2023



PART 1 - PLANNING INITIATIVES & COORDINATION

PennDOT

2045 Freight Movement Plan (2023)

Freight Work Group

Truck Parking Task Force

2050 Freight Movement Plan Update (On-going)

Stakeholders

PA State Police

PA Turnpike

PA Motor Trucking Association

Commercial Truck Stop Operators

Industrial Developers

Municipal Governments

Public Safety Officials



PENNSYLVANIA

2045 Freight Movement Plan



PUB 791 (05-23)



PART 1 - PLANNING INITIATIVES & COORDINATION

Regional Transportation Planning Partners

York County MPO

Southwestern Pennsylvania Commission (SPC)

Delaware Valley Regional Planning Commission (DVRPC)

Lancaster County MPO

Eastern PA Freight Alliance

National Partners

Federal Highway Administration (FHWA) - The National Coalition for Truck Parking

The Eastern Transportation Coalition (TETC)

AASHTO



PART 1 – RECOMMENDED PRIORITY CORRIDORS



Recommended Priority Corridors

Tier I Corridors

Tier I corridors are those where most of the links have truck parking scores of 80 and above. There may be sporadic links in these corridors that fall into the 60-69 and 70-79 score groups, but the corridors primarily contain segments of links with scores of 80 or more.

- I-76 from US-1 to I-95 in Philadelphia
- I-78 from Exit 49 (PA 100) to PA-NJ state line
- I-79 from Ohio River to Exit 76 (Pennsylvania Turnpike)
- I-81 from Carlisle to Susquehanna River
- I-81 from I-83 to I-78
- I-83 from US 322 to I-81
- I-95 in the Philadelphia area from the Delaware state line to I-276.
- Pennsylvania Turnpike (I-76) from Exit 57 (US 22) to Exit 75 (I-70)
- Pennsylvania Turnpike (I-76) from Exit 298 (I-176) to Norristown (I-476)
- Pennsylvania Turnpike (I-276) from Valley Forge (I-76) to I-95

Tier II Corridors

Tier II corridors are those where most of the links have truck parking scores in the 70-79 range and intermittent links in the 80+ group. There may be sporadic links in these corridors that fall into the 60-69 score group, but these corridors primarily contain segments of links with scores of 70 or more.

- I-70 sections between I-79 and Pennsylvania Turnpike (I-76)
- I-76 from Pennsylvania Turnpike (Valley Forge Interchange) to Exit 340 (US 1)
- I-78 from I-81 to Exit 49 (PA 100)
- I-79 from Exit 49 (PA 576) to Ohio River
- I-80 in Emlenton and Bloomsburg areas
- I-81 from PA-MD state line to Carlisle (PA Turnpike)
- I-81 from Susquehanna River to I-83
- I-81 from Exit 164 (Sugar Notch) to Exit 194 (I-476)
- I-83 from York (US 30) to US 322 in Dauphin County
- I-84 from I-81 (Dunmore) to I-380
- I-376 from Exit 64 (I-79) to Exit 80 (US 22)
- I-476 from I-76 (Conshohocken) to I-276 (Norristown)
- Pennsylvania Turnpike (I-76) from Exit 13 (Homewood) to Exit 57 (US 22/Pittsburgh)
- Pennsylvania Turnpike (I-70/I-76) from Exit 75 (New Stanton) to Somerset North/South Service Plazas
- Pennsylvania Turnpike Northeast Extension (I-476) from I-276 (Norristown) to I-78 (Lehigh Valley)



PART 2 - TRUCK PARKING EXPANSION



LEVEL 1 – Interstate Ramps



LEVEL 2A - Weigh Stations



York County I-83 Weigh Station near Newberrytown



LEVEL 2B – Low Cost Locations



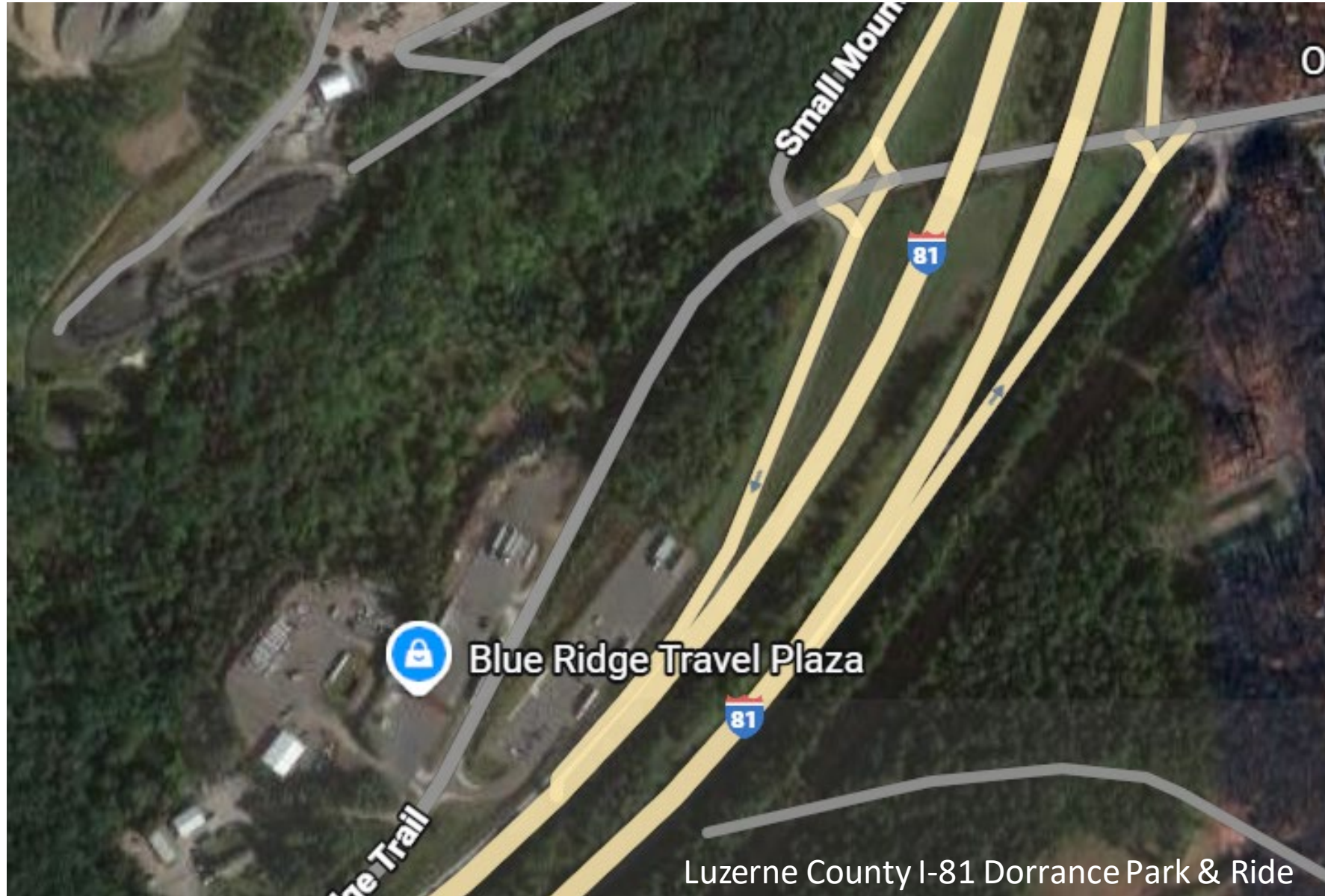
Luzerne County SR 315 near Dupont



LEVEL 3 – Medium Cost Locations

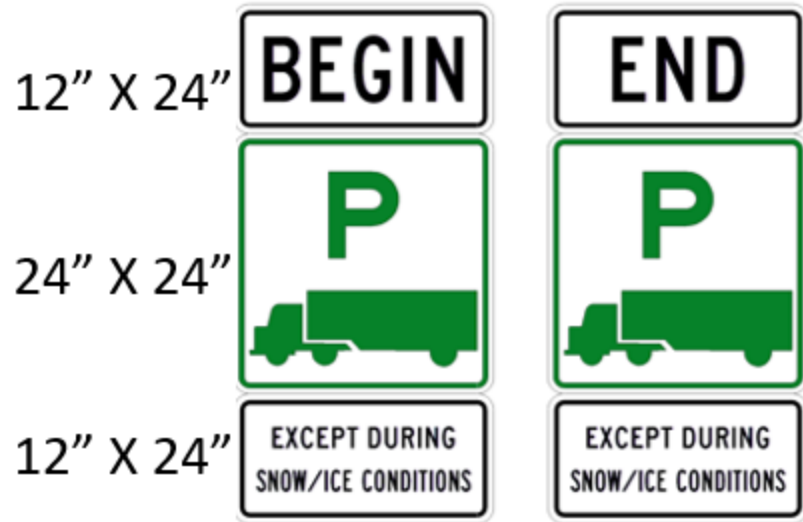


Level 4 – Capital Project Locations



SIGNAGE

FOR RAMPS

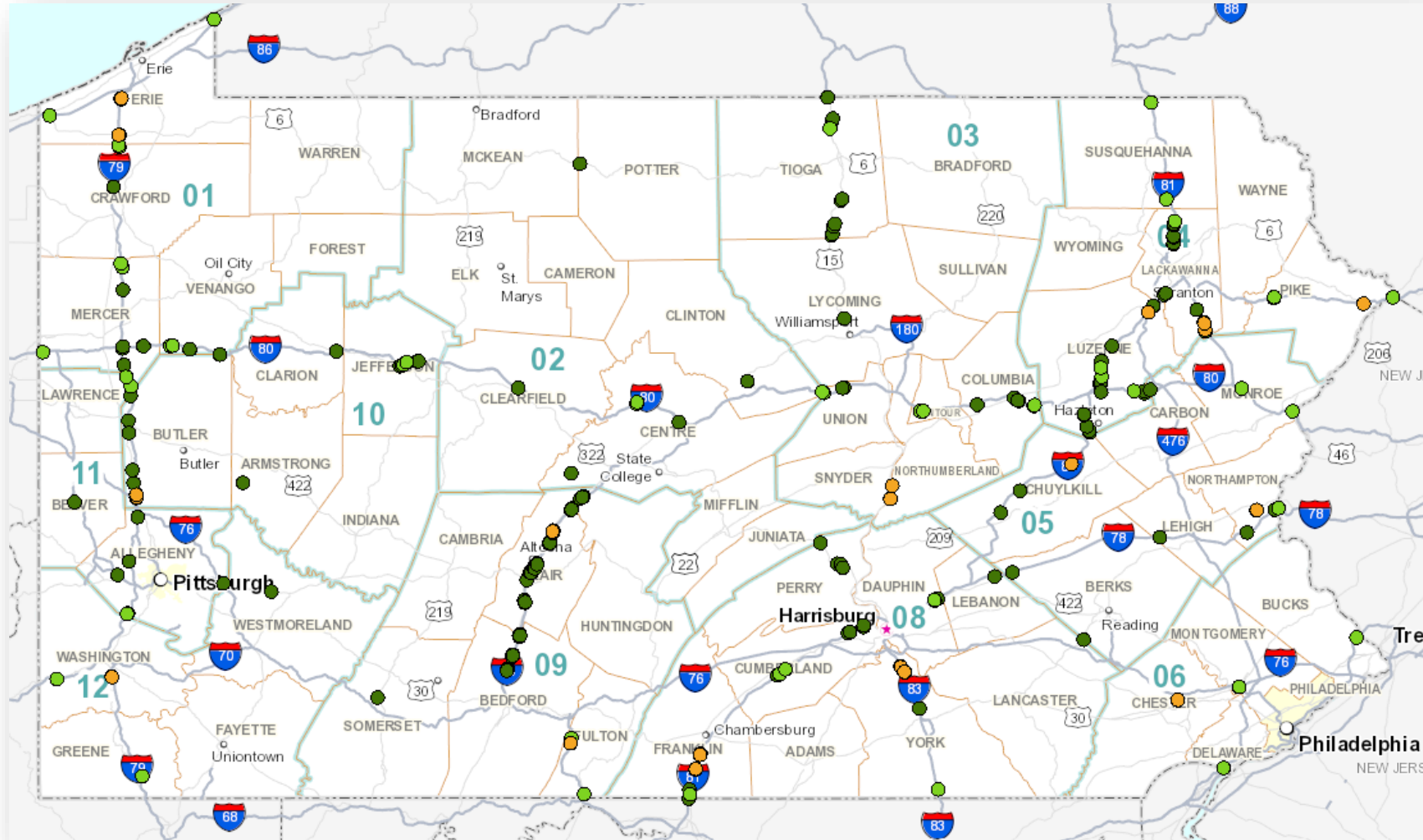


ALL OTHER PARKING LOCATIONS



TRUCK PARKING LOCATIONS

Completed and Planned for 2026



Existing PennDOT Locations



Planned Locations



Completed Locations



511PA.COM



ADVISORIES Attention Travelers: The Rest Areas on I-80 EB and WB at MM 194 in Clinton County are closed for facility maintenance. Please plan accordingly.

Q Search Map

Legend

Go to PA Turnpike Only Clear All

Travel Info

- Traffic Speeds
- Road Conditions
- Weather Restrictions
- Track My Plow
- Incidents
- Closures
- Active Roadwork
- Turnpike Planned Detours
- Special Events
- Surrounding States
- Cameras
- Turnpike Detours
- Park & Ride
- Public Truck Parking
 - Open
 - Closed
- Message Signs
- SEPTA Regional Rail Stations
- PennDOT Bridges

Map Satellite

Keyboard shortcuts Map data ©2026 Google 20 km Terms



QUESTIONS?

