

TRUCK PARKING PLANNING AND EXPANSION ACTIVITIES UPDATE



TAC AND STC MEETINGS

APRIL 8, 2026 AND MAY 13, 2026

DAN FARLEY, PE AND ROBERT PENTO, PE
MICHAEL RIMER, AICP

TRUCK PARKING PLANNING AND EXPANSION UPDATE



Source: FHWA



INTRODUCTION

- Good Morning - Introduction
- Part 1 - Planning Initiatives Collaboration Overview (examples)
 - **Truck Parking in Pennsylvania (TAC 2007)**
 - 2016 PA On Track - PA's first Freight Plan (2016)
 - 2045 Comprehensive Freight Movement Plan (2021)
 - **Expanding Truck Parking in Pennsylvania (TAC 2023)**
 - 2025 Comprehensive Freight Movement Plan Update (Underway / Current)
- Part 2 – Truck Parking Expansion Initiative
- Part 3 - Questions



PART 1 - PLANNING INITIATIVES & COORDINATION

PennDOT

2045 Freight Movement Plan (2023)

Freight Work Group

Truck Parking Task Force

2050 Freight Movement Plan Update (On-going)

Stakeholders

PA State Police

PA Turnpike

PA Motor Trucking Association

Commercial Truck Stop Operators

Industrial Developers

Municipal Governments

Public Safety Officials



PENNSYLVANIA

2045 Freight Movement Plan



PUB 791 (05-23)



PART 1 - PLANNING INITIATIVES & COORDINATION

Regional Transportation Planning Partners

York County MPO

Southwestern Pennsylvania Commission (SPC)

Delaware Valley Regional Planning Commission (DVRPC)

Lancaster County MPO

Eastern PA Freight Alliance

National Partners

Federal Highway Administration (FHWA) - The National Coalition for Truck Parking

The Eastern Transportation Coalition (TETC)

AASHTO



Public and Stakeholder Involvement

Many voices throughout the Commonwealth provided the foundation for effective development and successful implementation of Pennsylvania's 2045 FMP. The users of the statewide transportation network provide an essential perspective in shaping the strategic direction of the plan. To capture transportation system needs and concerns across Pennsylvania, input was solicited in various forums, and incorporated at strategic points during plan development. In addition to statewide public outreach and stakeholder engagement, extensive "in-reach" was conducted throughout the various PennDOT deputates, and also with transportation stakeholders and partners across the state.

Engagement Highlights

Public Outreach

Public Surveys Completed	7,400
Public Forum Views	1,905
E-News Contacts	2,700
Social Media Posts	11

Stakeholder Engagement

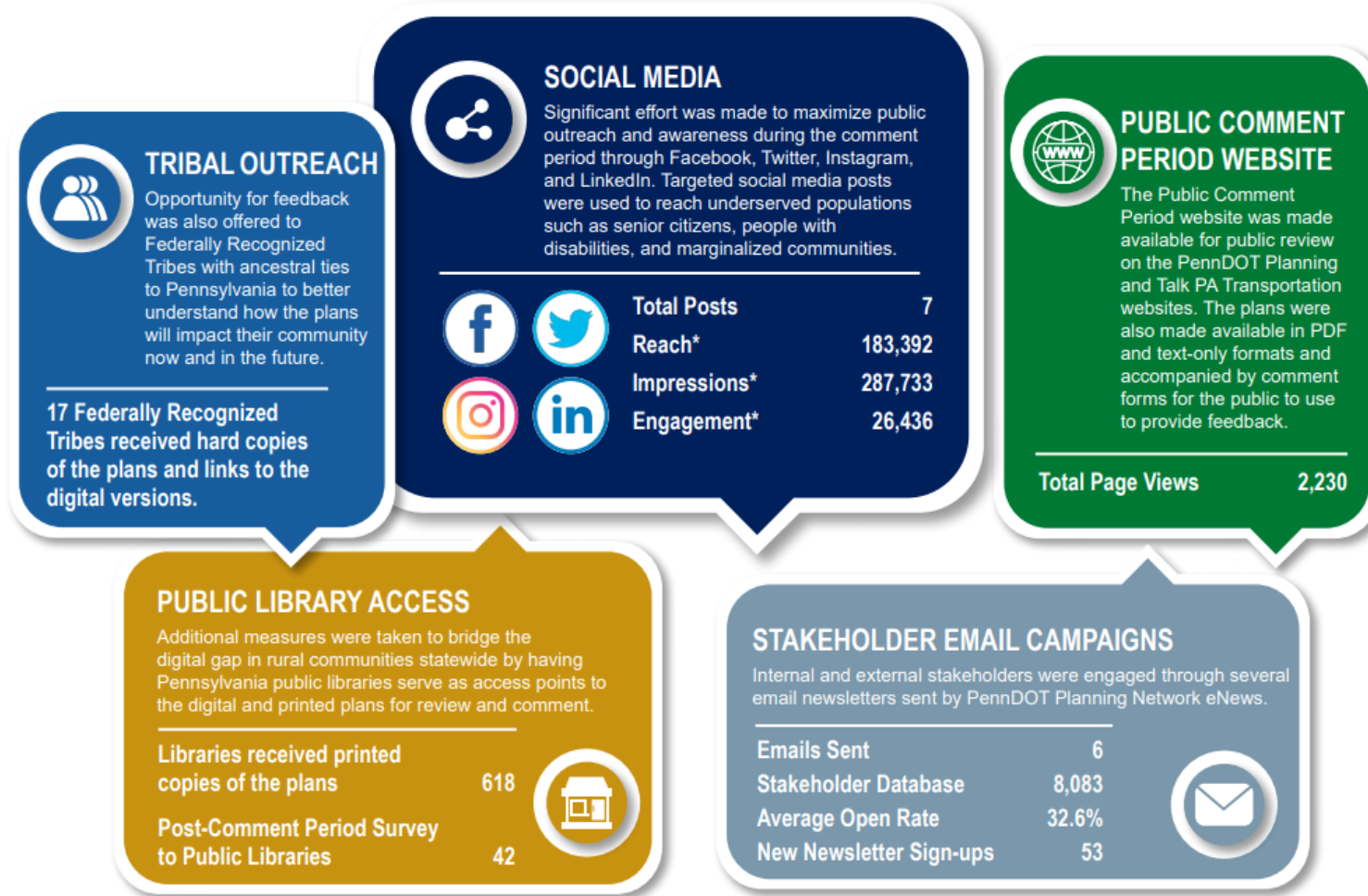
MPOs and RPOs Engaged	24
State Transportation Commission & Transportation Advisory Committee Presentations	8
Freight Focus Group Meetings by Mode	5
Statewide Virtual Freight Forum Registrations	225
Equity & Diversity Workshops Attendance	25
PennDOT Planning Network e-Blasts	9
State Planning Board Attendance	49
Regional Freight Advisory Committee Meetings	3

PennDOT In-reach & Interagency Collaboration

Executive Interviews	35
PennDOT Bureau/ District Personnel Engaged	>40
Partnering Agency Interviews & Presentations	6



Public Comment Period Outreach by the Numbers



***SOCIAL MEDIA DEFINITIONS**

- Reach is the number of people who saw any content from the PennDOT page or about the PennDOT page.
- Impressions are the number of times any content from PennDOT or about PennDOT entered a person's screen.
- Engagement is any action someone takes on PennDOT's page or one of PennDOT's posts.



PART 1 - PLANNING INITIATIVES & COORDINATION

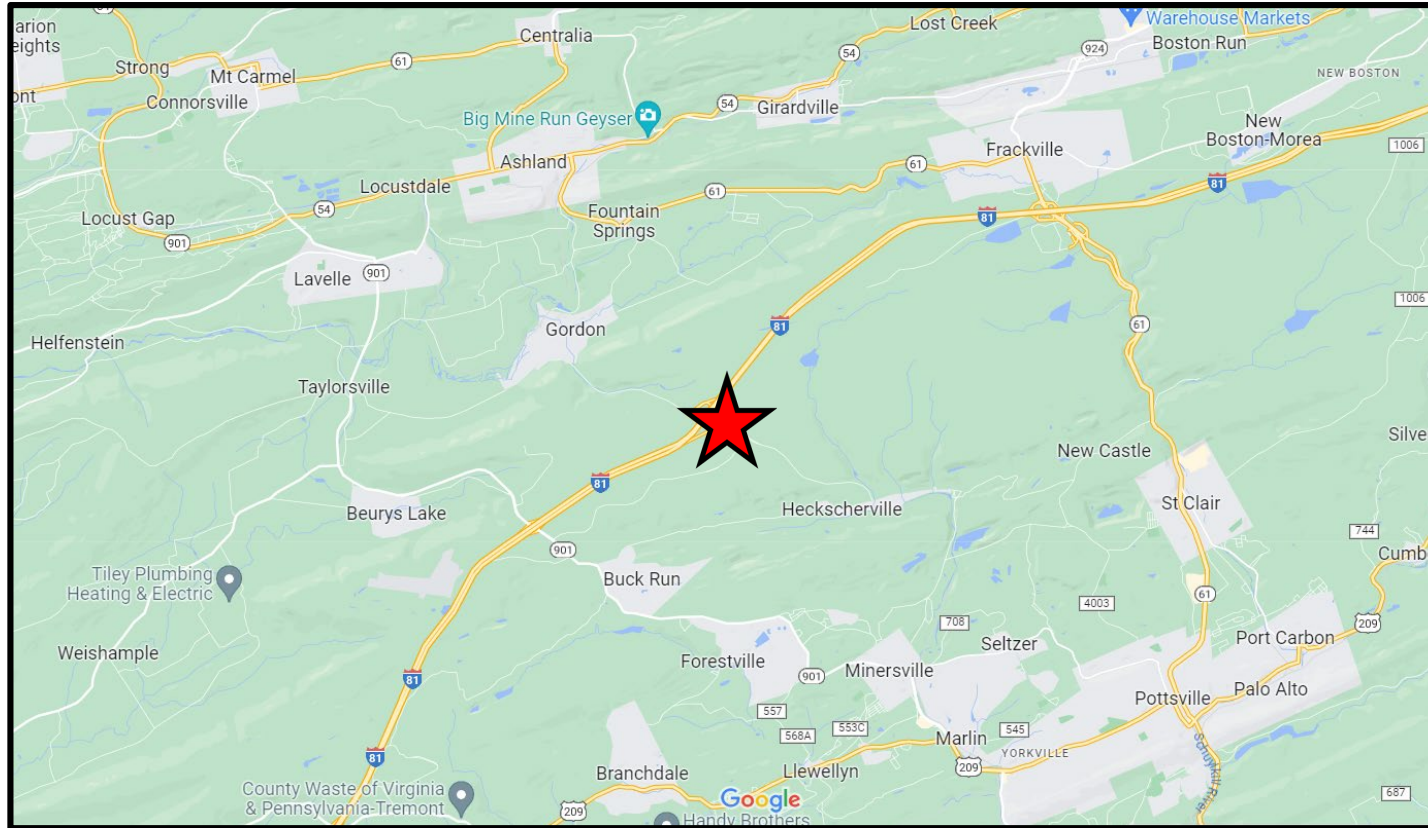
CPDM Planning and Collaboration Activities from 19 Recommendations in TAC report: Expanding Truck Parking in PA (2023):

- Ongoing Reporting of Parking Metrics to FHWA (IIJA Section 21104)
- P3 opportunities may exist with other Commonwealth owned properties and DCED development initiatives:
- Longer term measures may include off-highway; PennDOT can be facilitator and work with municipal partners and private industry to develop new capacity where needed.
 - Municipal Outreach - DVRPC Municipal Exchange (May 4, 2026)
 - Establish Outreach the PPA, PSATS others for Best Practices for industrial development.
 - Collaboration with Planning Partners and external organizations to identify opportunities for new truck parking capacity outside PennDOT rights-of-way
 - Collaboration with Planning Partners and external organizations for new Truck Parking capacity outside PennDOT rights-of-way.
- Regional project Locations (examples)
 - Onvo Heritage
 - Bellwether District development (Philadelphia)
 - Keystone Trade Center
 - JW Industrial Route 329



PART 1 - PLANNING INITIATIVES & COORDINATION

- PA Truck Parking Handbook development (On-going development)
- Onvo Highridge



PART 1 - PLANNING INITIATIVES & COORDINATION

- Onvo Highridge Site Layout and Concept



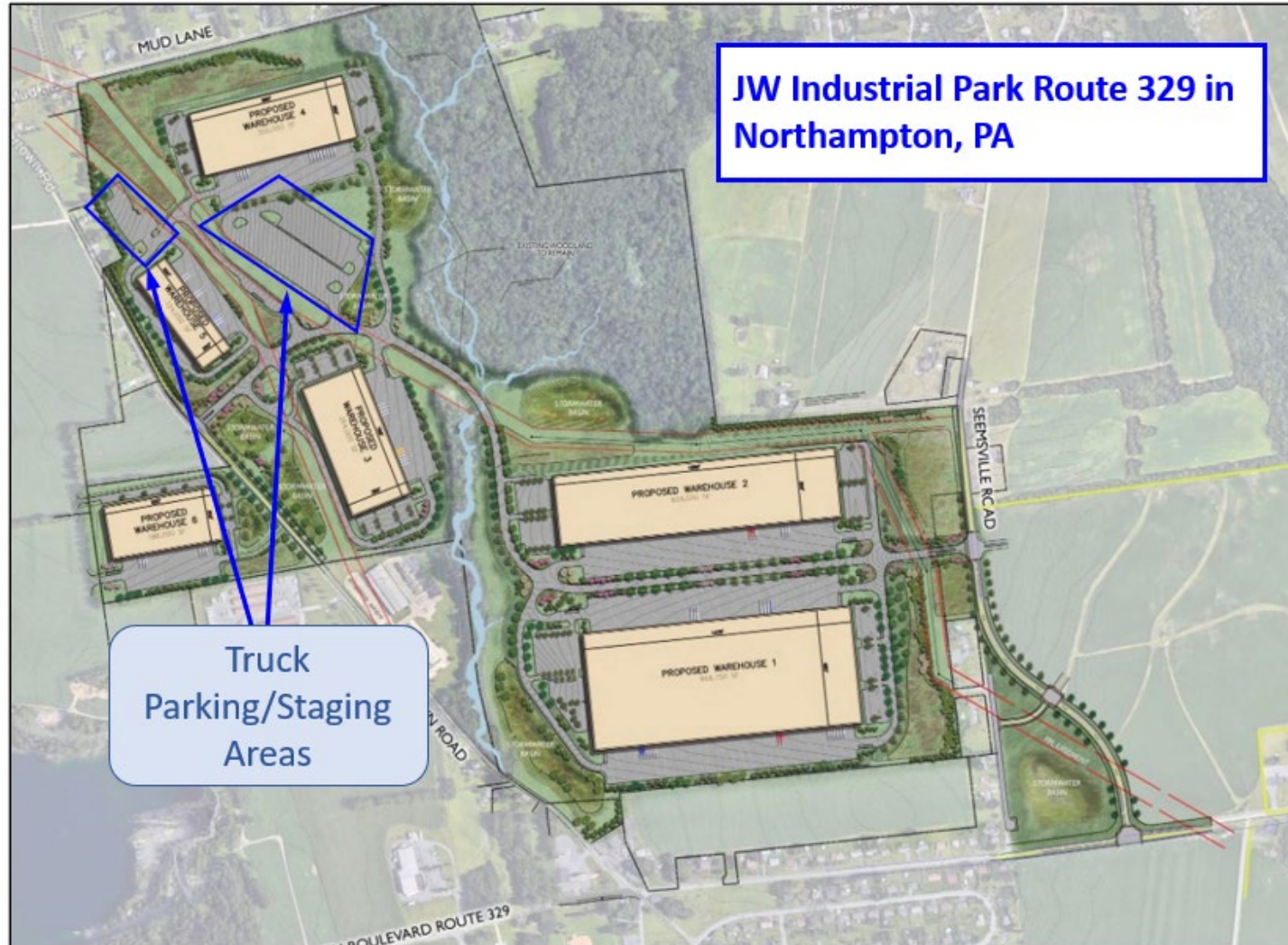
PART 1 - PLANNING INITIATIVES & COORDINATION

- Bellwether Site(s)



PART 1 - PLANNING INITIATIVES & COORDINATION

- JW Industrial Park / Rt 329



PART 1 - PLANNING INITIATIVES & COORDINATION



PENNSYLVANIA STATE TRANSPORTATION ADVISORY
COMMITTEE

TRUCK PARKING IN PENNSYLVANIA



FINAL REPORT
DECEMBER 2007

Expanding Truck Parking in Pennsylvania



Drone view of I-81 rest area, Mountaintop, PA, courtesy of Northeastern Pennsylvania Alliance



Pennsylvania
Transportation Advisory Committee

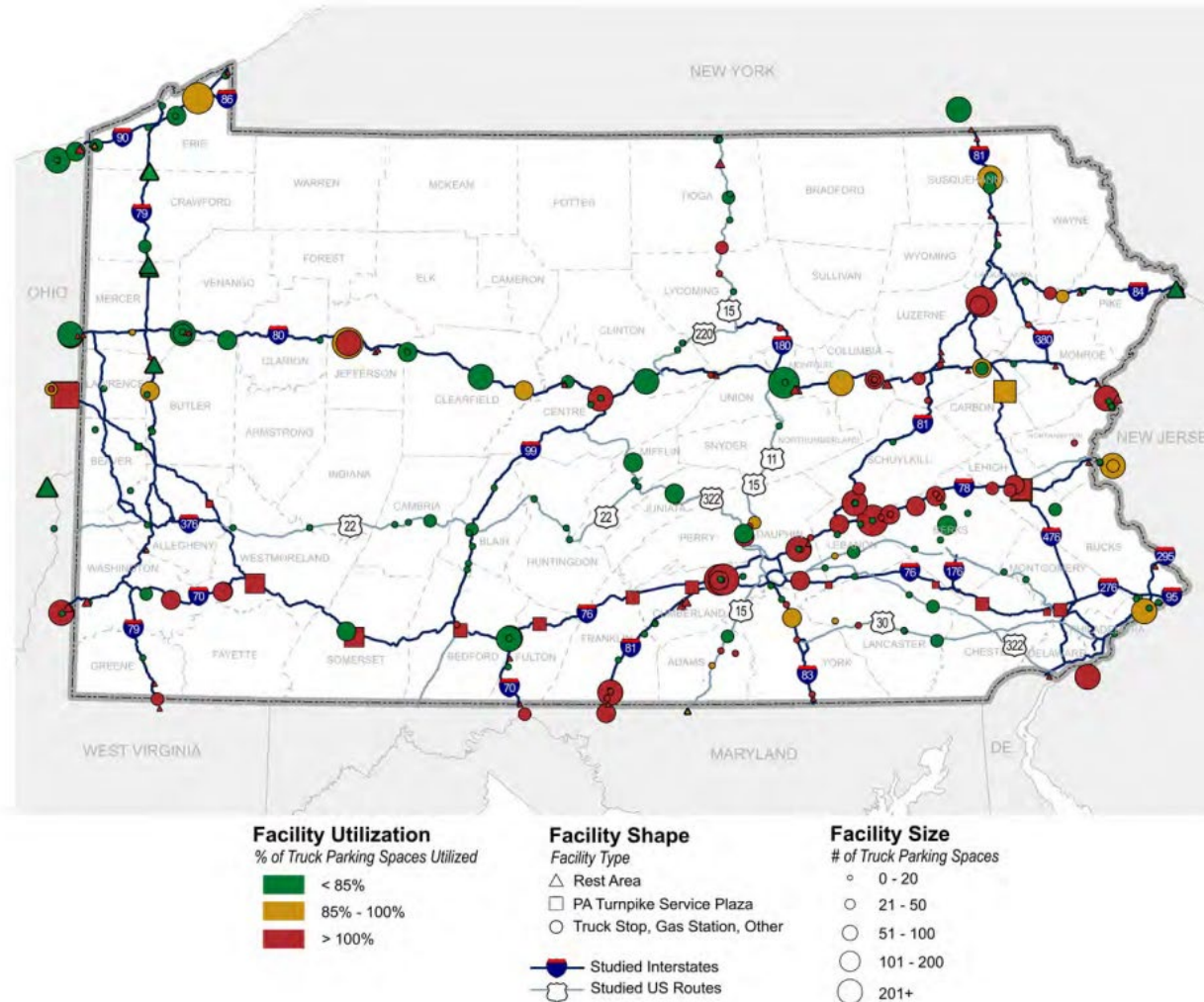
December 2023



PART 1 - PLANNING INITIATIVES & COORDINATION

Pennsylvania Truck Parking Need Update

Figure 1: Truck Parking Facility Utilization, 2020



PART 1 - PLANNING INITIATIVES & COORDINATION

Priority Corridors and Segments

Figure 3: Highways Analyzed - Core PA Truck Network

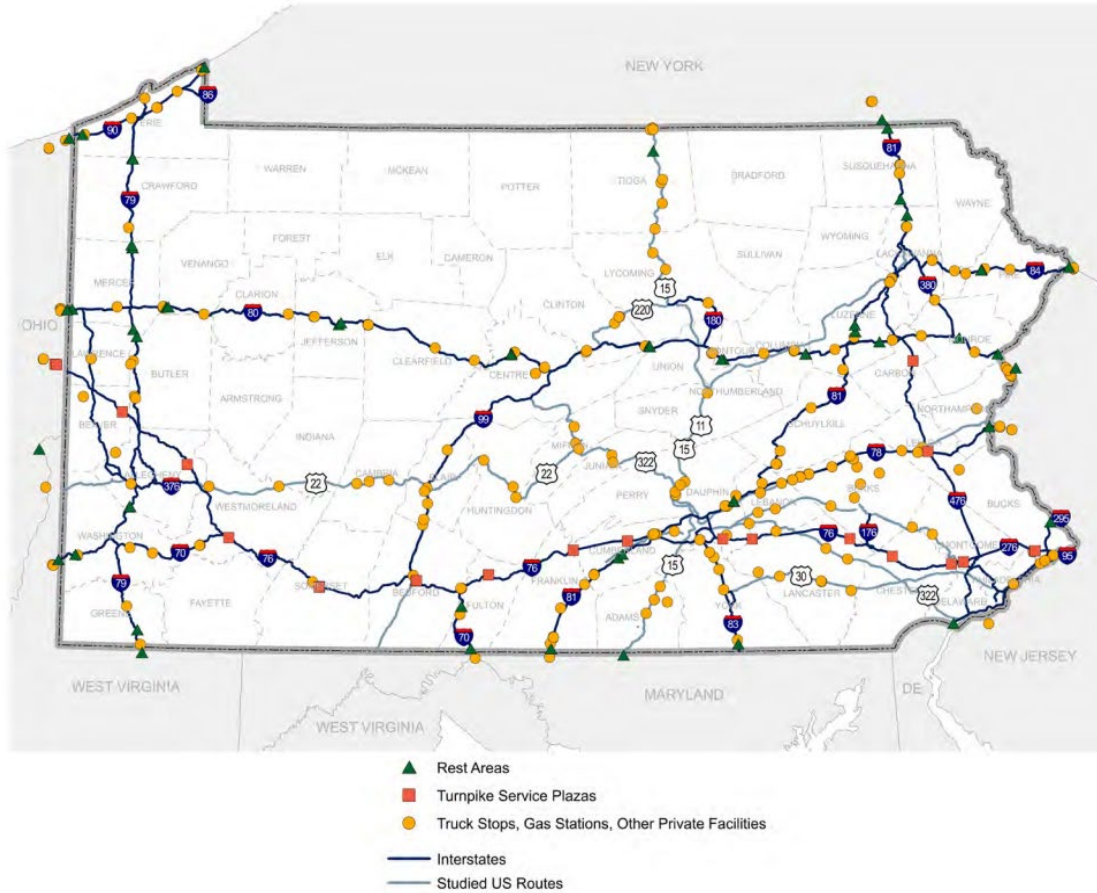
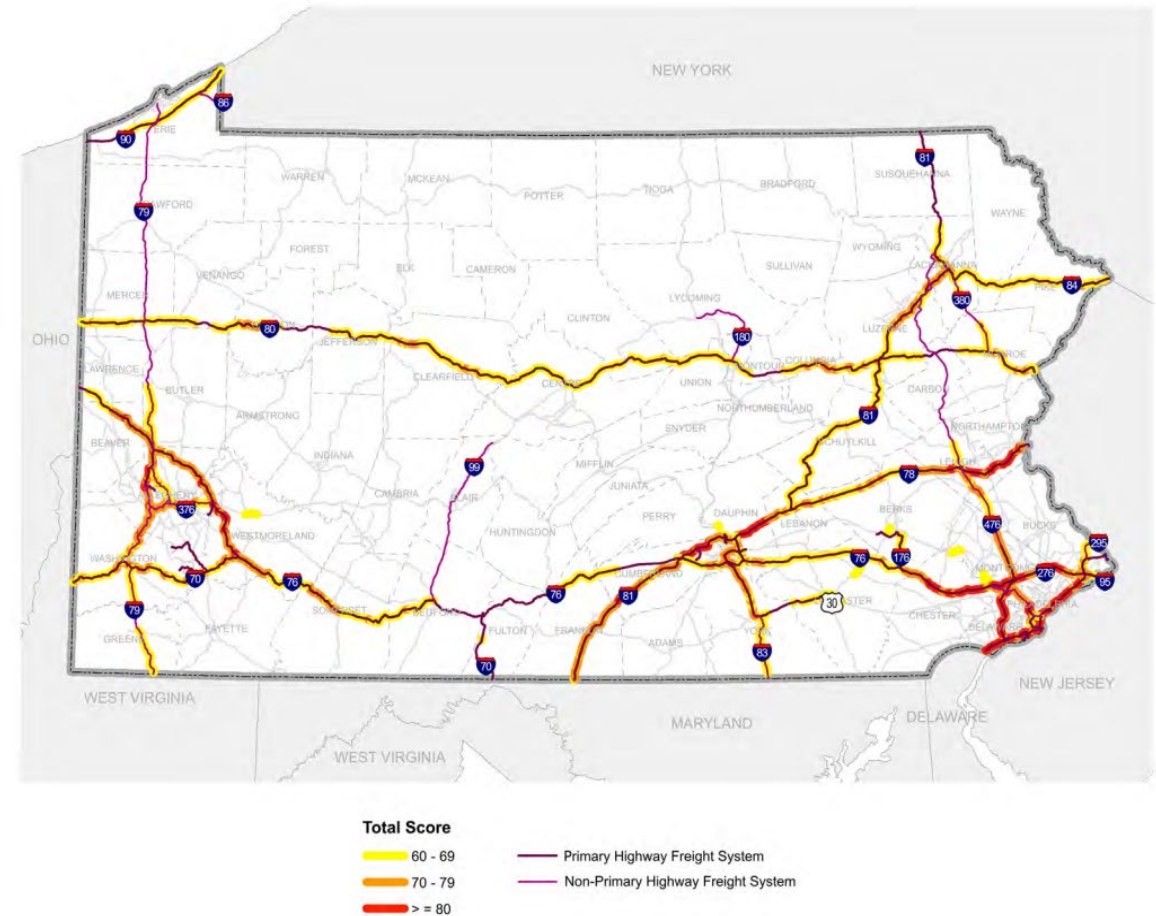


Figure 6: Corridors Scoring 60-100



PART 1 – RECOMMENDED PRIORITY CORRIDORS



Recommended Priority Corridors

Tier I Corridors

Tier I corridors are those where most of the links have truck parking scores of 80 and above. There may be sporadic links in these corridors that fall into the 60-69 and 70-79 score groups, but the corridors primarily contain segments of links with scores of 80 or more.

- I-76 from US-1 to I-95 in Philadelphia
- I-78 from Exit 49 (PA 100) to PA-NJ state line
- I-79 from Ohio River to Exit 76 (Pennsylvania Turnpike)
- I-81 from Carlisle to Susquehanna River
- I-81 from I-83 to I-78
- I-83 from US 322 to I-81
- I-95 in the Philadelphia area from the Delaware state line to I-276.
- Pennsylvania Turnpike (I-76) from Exit 57 (US 22) to Exit 75 (I-70)
- Pennsylvania Turnpike (I-76) from Exit 298 (I-176) to Norristown (I-476)
- Pennsylvania Turnpike (I-276) from Valley Forge (I-76) to I-95

Tier II Corridors

Tier II corridors are those where most of the links have truck parking scores in the 70-79 range and intermittent links in the 80+ group. There may be sporadic links in these corridors that fall into the 60-69 score group, but these corridors primarily contain segments of links with scores of 70 or more.

- I-70 sections between I-79 and Pennsylvania Turnpike (I-76)
- I-76 from Pennsylvania Turnpike (Valley Forge Interchange) to Exit 340 (US 1)
- I-78 from I-81 to Exit 49 (PA 100)
- I-79 from Exit 49 (PA 576) to Ohio River
- I-80 in Emlenton and Bloomsburg areas
- I-81 from PA-MD state line to Carlisle (PA Turnpike)
- I-81 from Susquehanna River to I-83
- I-81 from Exit 164 (Sugar Notch) to Exit 194 (I-476)
- I-83 from York (US 30) to US 322 in Dauphin County
- I-84 from I-81 (Dunmore) to I-380
- I-376 from Exit 64 (I-79) to Exit 80 (US 22)
- I-476 from I-76 (Conshohocken) to I-276 (Norristown)
- Pennsylvania Turnpike (I-76) from Exit 13 (Homewood) to Exit 57 (US 22/Pittsburgh)
- Pennsylvania Turnpike (I-70/I-76) from Exit 75 (New Stanton) to Somerset North/South Service Plazas
- Pennsylvania Turnpike Northeast Extension (I-476) from I-276 (Norristown) to I-78 (Lehigh Valley)



PART 2 - TRUCK PARKING EXPANSION



LEVEL 1 – Interstate Ramps



LEVEL 2A - Weigh Stations



York County I-83 Weigh Station near Newberrytown



LEVEL 2B – Low Cost Locations



Luzerne County SR 315 near Dupont



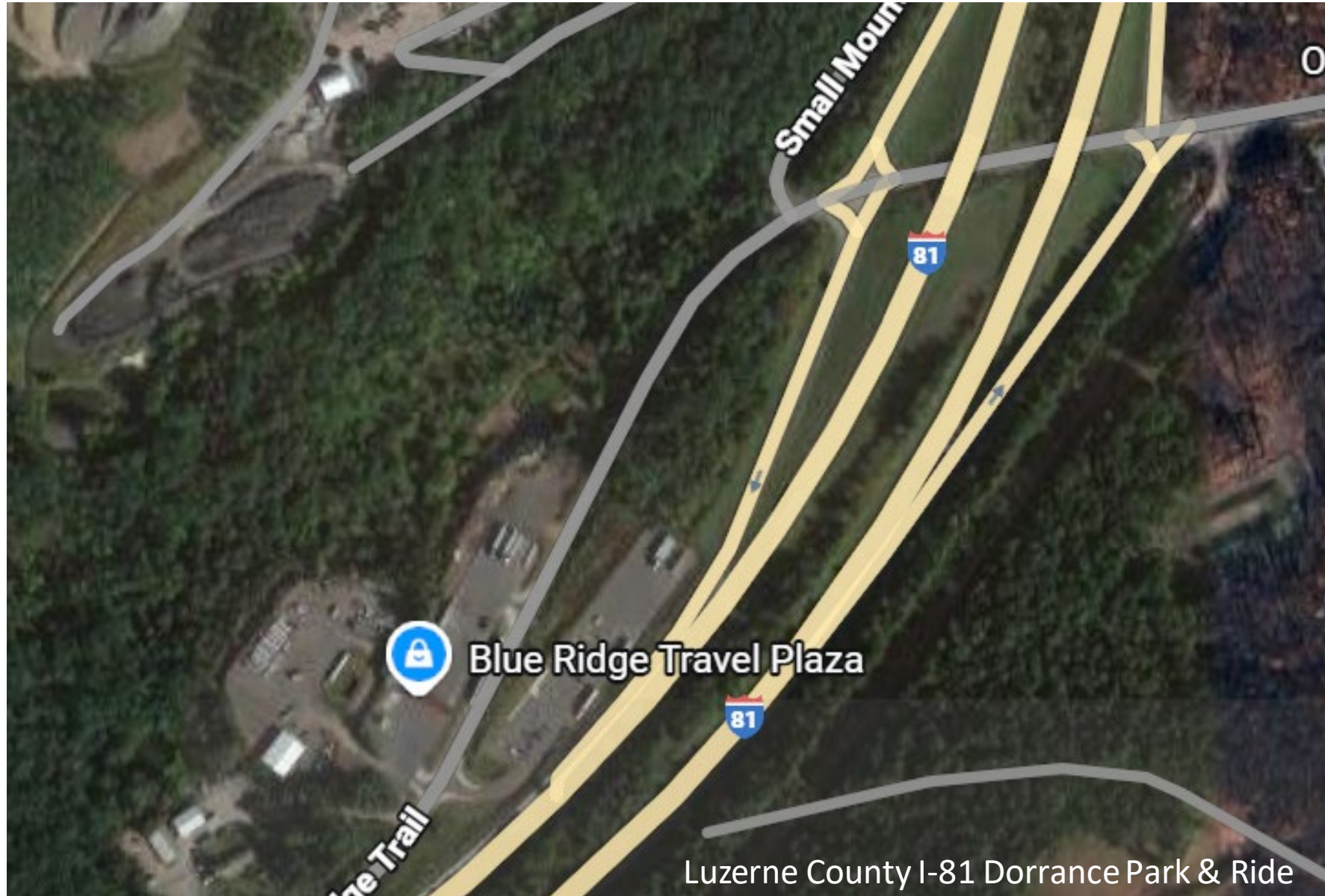
LEVEL 3 – Medium Cost Locations



Washington County SR 8005 off of I-79 South of Washington PA

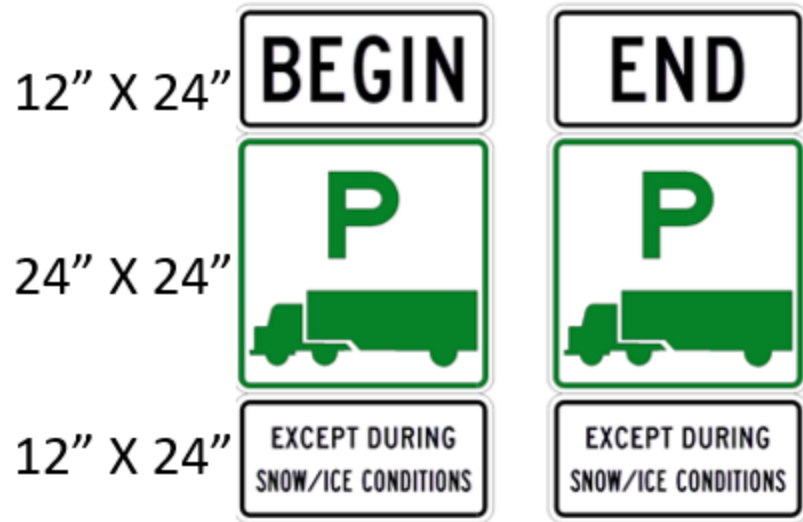


Level 4 – Capital Project Locations



SIGNAGE

FOR RAMPS

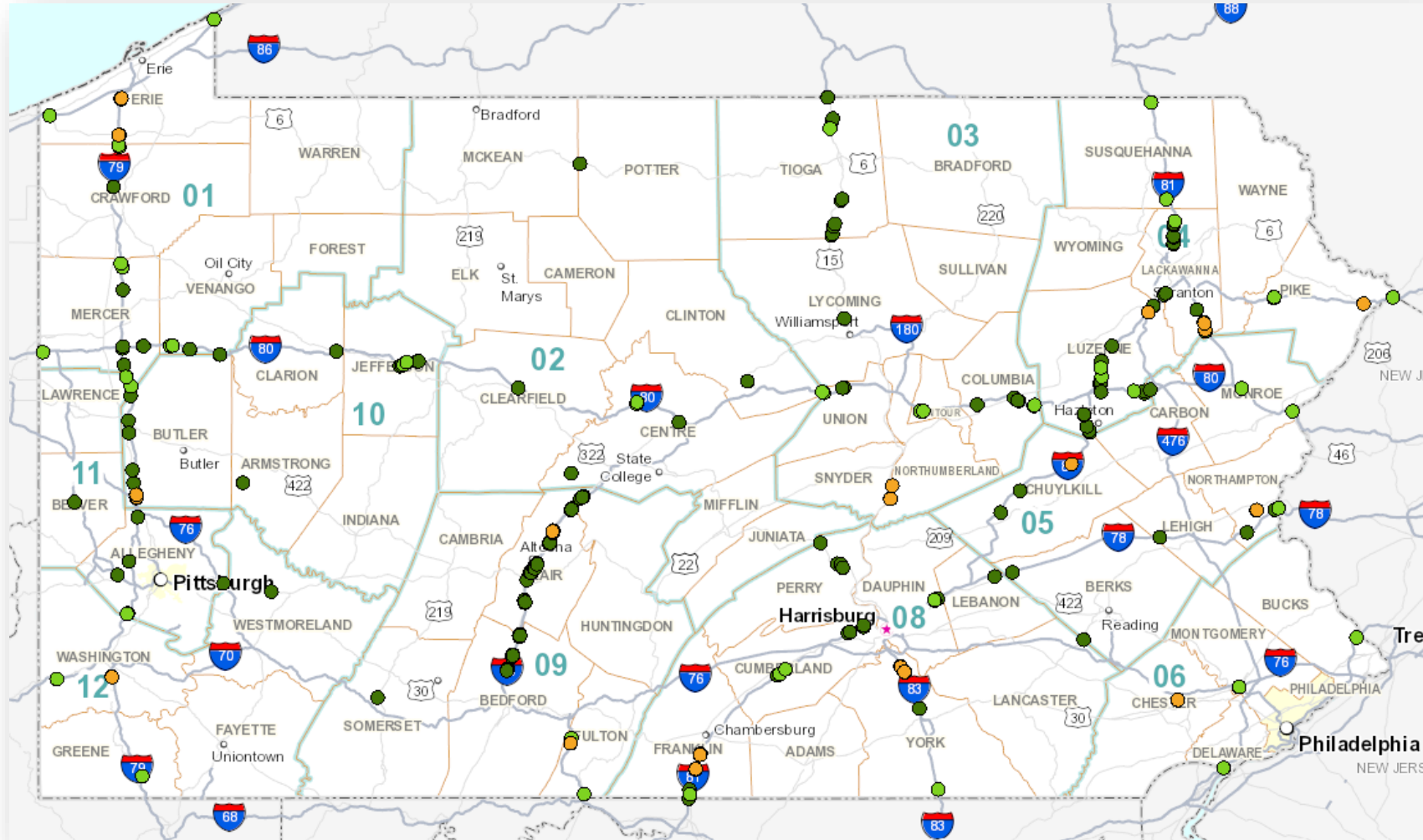


ALL OTHER PARKING LOCATIONS



TRUCK PARKING LOCATIONS

Completed and Planned for 2026



Existing PennDOT Locations



Planned Locations



Completed Locations



511PA.COM



ADVISORIES Attention Travelers: The Rest Areas on I-80 EB and WB at MM 194 in Clinton County are closed for facility maintenance. Please plan accordingly.

Q Search Map

Legend

Go to PA Turnpike Only Clear All

Travel Info

- Traffic Speeds
- Road Conditions
- Weather Restrictions
- Track My Plow
- Incidents
- Closures
- Active Roadwork
- Turnpike Planned Detours
- Special Events
- Surrounding States
- Cameras
- Turnpike Detours
- Park & Ride
- Public Truck Parking
 - Open
 - Closed
- Message Signs
- SEPTA Regional Rail Stations
- PennDOT Bridges

Map Satellite

Keyboard shortcuts Map data ©2026 Google 20 km Terms



QUESTIONS?

